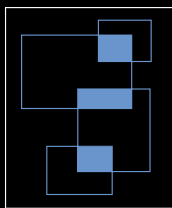
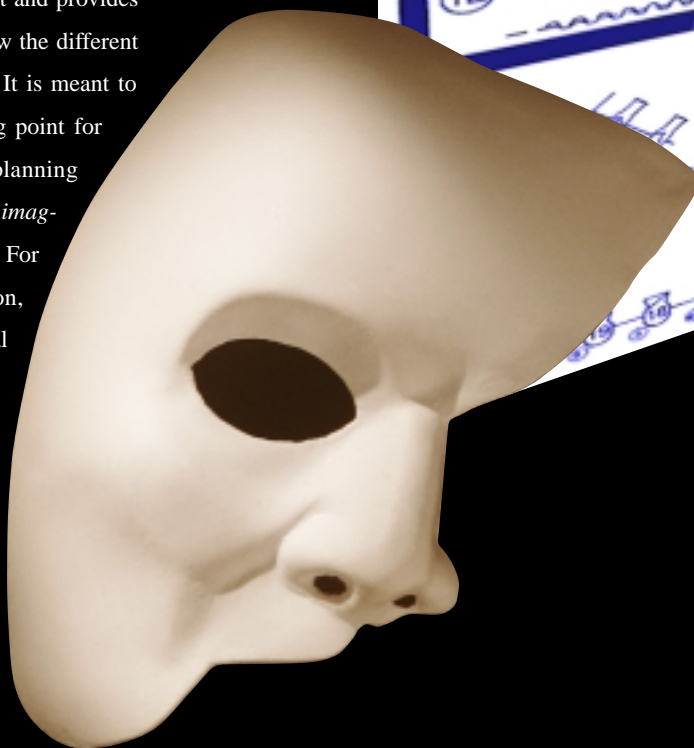


Small Theatre Lighting Layout GUIDE

48 CHANNELS



A large part of effecting sparkling creative vision is having the right tools to project what the mind sees. This brochure is equipped with all the information necessary to implement your next stage project. It includes a complete lighting design package, light plot and equipment list, the latest in Altman equipment and provides an example of how the different fixtures are used. It is meant to serve as a starting point for budgeting and planning and to bring *your imagination to light*. For more information, contact your local Altman sales representative.



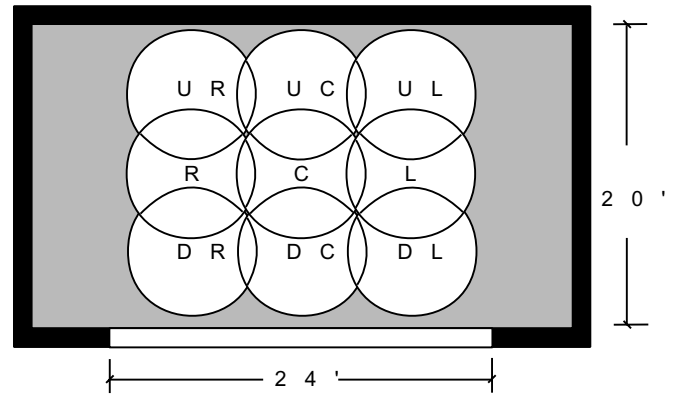
ALTMAN
BRINGING IMAGINATION TO LIGHT



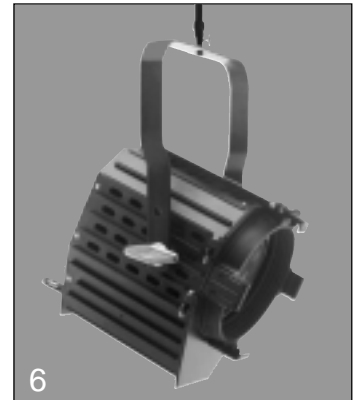
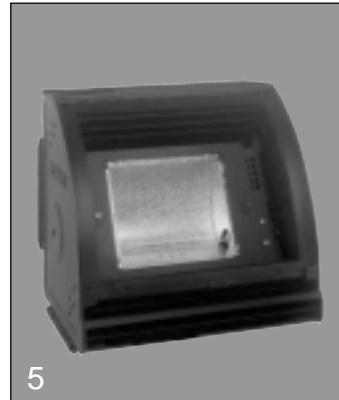
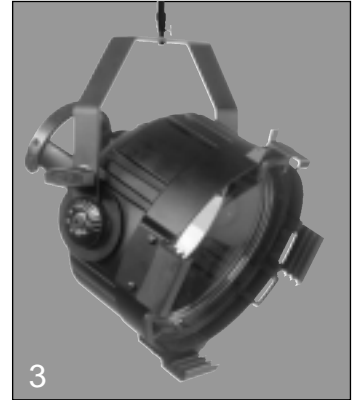
Small Theatre Layout

The small theatre package is intended for theatres with a stage approximately 24' wide and 20' deep. It uses 48 control channels, a common size in both manual and computerized control boards. It is designed to have a one-to-one dimmer to channel patch using 48 – 2.4Kw dimmers. Again, 48 is an industry standard size (often referred to as a “half rack”) There are extra circuits at each position.

The design is based on the principal of dividing the stage into “Areas”. There are nine of these areas each approx. 8'-0” in diameter. Each area has a variety of lamps assigned to light it from different angles, and colors. This system provides an efficient and flexible way to control what areas of the stage are bright and more importantly, which areas are dark. It is very useful for all types of performance, plays, musicals, opera, choirs, or dance. As the productions become more complex, they will need to have specific lighting designed to accommodate the production. Contact a lighting designer or consultant for an accurate evaluation. This package provides enough equipment to be re-arranged in a variety of different ways.

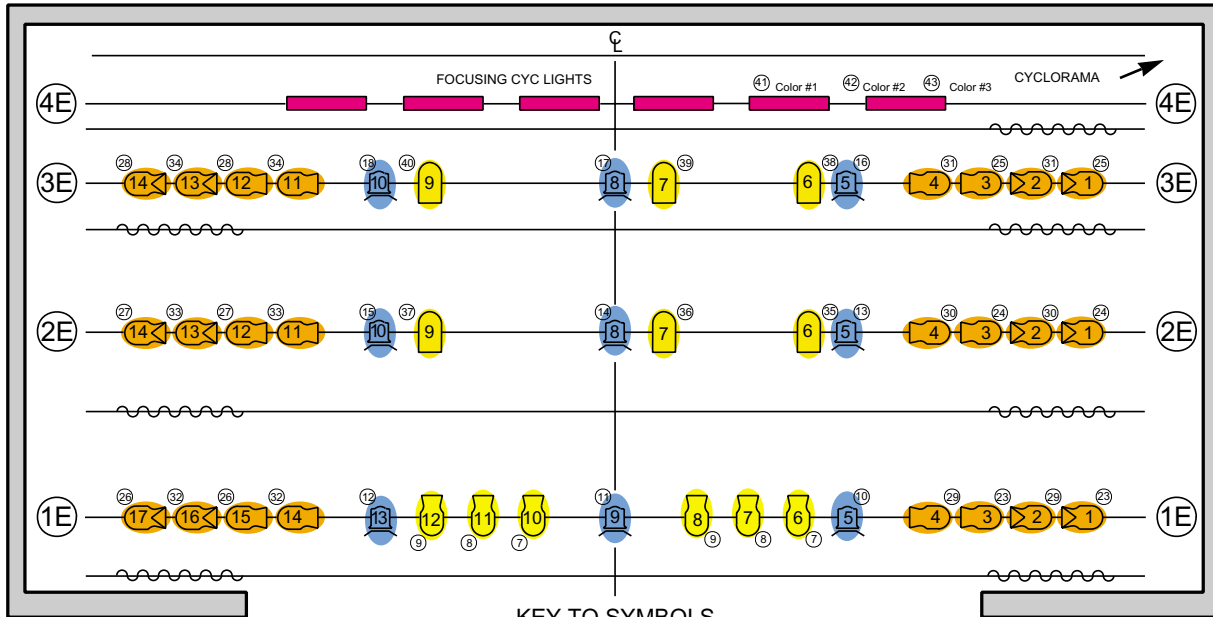


- 1 *Shakespeare*
- 2 *Comet Follow Spot*
- 3 *Star Par*
- 4 *360 Q*
- 5 *Focusing Cyc*
- 6 *IKAF Fresnel*

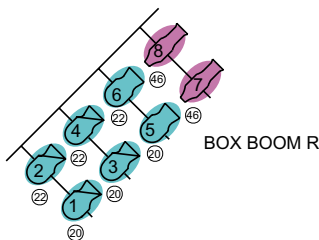




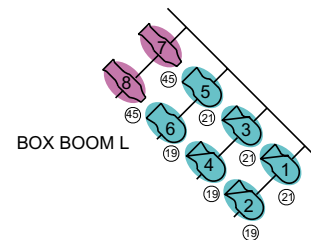
Small Theatre Layout



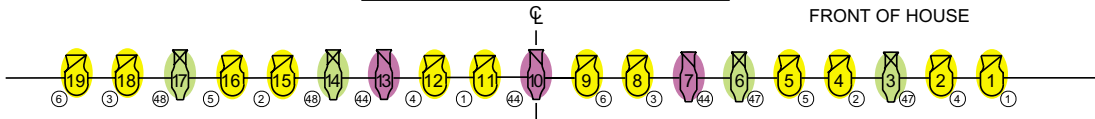
KEY TO SYMBOLS



	4.5" x 6" 360Q	575W - 750W
	6" x 9" 360Q	575W - 750W
	6" x 12" 360Q	575W - 750W
	40° SHAKESPEARE	575W - 750W
	30° SHAKESPEARE	575W - 750W
	20° SHAKESPEARE	575W - 750W
	1KAF 6" FRESNEL	1000W
	STARPAR WFL	575W



FRONT OF HOUSE



AREA LIGHT: THESE FIXTURES PROVIDE BASIC FRONTAL ILLUMINATION. THE STANDARD ACTING AREA PRODUCES SHADOWS ON THE FACE THAT MOST NEARLY APPROXIMATE THOSE FOUND IN OUTDOOR LIGHTING ON A SUNNY DAY. IF ONE OF THE TWO FIXTURES IS EQUIPPED WITH A WARM TINT, FOR EXAMPLE, STRAW, AND THE OTHER WITH A COOL TINT, FOR EXAMPLE, DAYLIGHT BLUE THE EFFECT WILL BE EVEN MORE REALISTIC.

DOWN LIGHT - USED TO PROVIDE ISOLATION OF SELECTED PARTS OF A SCENE. IS VERY HELPFUL IN PROVIDING DEPTH, AND ADDING COLOR TONES.

FRONT DIAGONAL - IS USED TO PROVIDE A WASH OF COLOR ACROSS THE STAGE. IT IS POSITIONED AT AN ANGLE SO THAT THE LIGHT DOES NOT CAST A SHADOW ON THE CYCLORAMA OR BACKDROP. VERY USEFUL FOR TONING AN ENTIRE SCENE IN ONE OR MORE COLORS FOR EXAMPLE AN EFFECTIVE SUNRISE OR SUNSET CAN BE CREATED BY USING WARM TONES IN THE LEFT WASH, AND COOL TONES IN THE RIGHT WASH. ALSO AN EXCELLENT ANGLE FOR ADDING TEXTURE TO A SCENE THROUGH THE USE OF TEMPLATES.

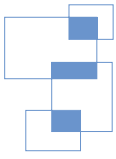
CYC LIGHT - USED TO PROVIDE A WASH OF COLOR ON THE CYCLORAMA OR BACKDROP. A VARIETY OF LOOKS CAN BE CREATED USING THREE COLORS ON TOP AND FOUR COLORS ON THE BOTTOM.

PIPE END - THIS LIGHT IS FOR SCULPTING THE BODY AND REVEALING THREE DIMENSIONAL FORMS. IT IS VERY USEFUL FOR MAKING THE PERFORMERS STAND OUT AGAINST THE BACKGROUND. THE LIGHT IS GROUPED INTO "LANES" WHICH CONSIST OF APPROXIMATELY TWO AND A HALF AREAS IN ROW LEFT TO RIGHT. FOR EXAMPLE THE DOWNSTAGE FIXTURES WOULD FOCUS THE FIRST UNIT HALFWAY BETWEEN DL AND DC. THE SECOND UNIT WOULD FOCUS HALFWAY BETWEEN DR AND DC. THEY BLEND TOGETHER TO FORM A PATH, WHICH ONLY LIGHTS PERFORMERS ON THE DOWNSTATE LINE OF AREAS. THIS IS USEFUL TO CREATE DEPTH IN THE STAGE PICTURE, BY HAVING PERFORMERS AT DIFFERENT DISTANCES UPSTAGE APPEAR AT DIFFERENT INTENSITIES.

BACK LIGHT - IS USED TO CREATE DEPTH IN THE STAGE PICTURE. IT PROVIDES A STRONG HIGHLIGHT ALONG THE SHOULDERS AND BACK OF THE HEAD OF THE PERFORMER. IT IS THE MOST EFFECTIVE WAY TO MAKE THE PERFORMER "POP" IN FRONT OF THE SCENERY.

TEMPLATE WASH - A GENERAL CIRCUIT FOR ADDING TEXTURE/PROJECTIONS TO A SCENE. THE DESIGNERS IMAGINATION IS THE ONLY LIMITING FACTOR.

SPECIAL - THIS IS A GENERIC TERM FOR ANY LIGHT THAT HAS A UNIQUE FOCUS SPECIFIC TO A PARTICULAR PERFORMANCE OR SCENE. IT CAN BE THOUGHT OF AS A WILDCARD.



Small Theatre Specs

FIXTURES

ALL FIXTURES ARE U.L. AND c.U.L. LISTED FOR WATTAGE SPECIFIED

12	360Q-4.5X 6.5	4.5" X 6 ELLIPSOIDAL AXIALLY MOUNTED QUARTZ SPOTLIGHT 575W
22	360Q-6X 9	6"X9" ELLIPSOIDAL AXIALLY MOUNTED QUARTZ SPOTLIGHT 575W
20	360Q -6X12	6" X 12" ELLIPSOIDAL AXIALLY MOUNTED QUARTZ SPOTLIGHT 575W
3	S6-30	30° SHAKESPEARE SERIES ELLIPSOIDAL SPOTLIGHT 575W
4	S6-20	20° SHAKESPEARE SERIES ELLIPSOIDAL SPOTLIGHT 575W
4	S6-40	30° SHAKESPEARE SERIES ELLIPSOIDAL SPOTLIGHT 575W
9	1KAF	6" DIE-CAST FRESNEL 1000W
6	SP-A	STAR PAR WIDE FLOOD DIE-CAST SPOTLIGHT/FLOODLIGHT 575W
18	FC-1	FOCUSING CYC – GROUND AND SKY CYC LUMINAIRE 300-1500W

FOLLOWSPOTS

2	COMET	COMET FOLLOWSPOT 360/410W
---	-------	---------------------------

HARDWARE

8	509-24-2	24" DOUBLE TEE SIDE ARM
---	----------	-------------------------

ACCESSORIES

50	6-SN	BLACK SNOOT FOR 360Q
11	S6-4.5-SN	BLACK SNOOT FOR SHAKESPEARE
6	8-SN	BLACK SNOOT FOR STAR PAR
3	SDii	DROP-IN IRIS FOR SHAKESPEARE
12	360PH	PATTERN HOLDER FOR 360Q AND SHAKESPEARE
9	6-BD-4	4 – WAY BARNDOR FOR 6" FRESNEL
6	4.5-DN	BLACK DONUT FOR SHAKESPEARE
6	6-DN	BLACK DONUT FOR 360Q
6	97-0150	COMPLETE LENS SET FOR STAR PAR
6	510	MALLEABLE IRON PIPE CLAMP
3	FL-3Y	W/HARDWARE KIT

DISTRIBUTION

5	300-138GF	30'-0" RACEWAY WITH 12 CIRCUITS AND 24 PIGTAILS ON 1'-6" CENTERS (FOH, 1st, 2nd, 3rd, & 4th. elec.)
2	300-138GF	9'-0" RACEWAY WITH 6 CIRCUITS AND 12 PIGTAILS ON 1'-6" CENTERS (Box Boom L&R)
6	FF-701-4-GPC	FLOOR POCKET WITH 4 CIRCUITS
4	4x512L	CABLE CRADLE FOR MOVING ELECTRICS

DIMMING & CONTROL

1	48 CHANNEL CONTROL CONSOLE BY OTHERS
48	2.4Kw DIMMERS BY OTHERS
3	PLUG IN STATIONS BY OTHERS

SEND FOR FREE THEATRE KIT!

All the information you need to make a professional presentation is included in Altman's free Theater Kit. Created to ensure that your theater will be properly lit, it includes all the necessary specifications and materials for your project so that it can be directly used by your designer or architect, or to help you win the funding you need.

For more information, call
914-476-7987
or visit our Web site at <http://www.altmanltg.com>.



ALTMAN

BRINGING IMAGINATION TO LIGHT

Altman Stage Lighting, Company • 57 Alexander Street, Yonkers, NY 10701
PH: 914. 476.7987 FAX: 914. 963.7304.