



AVENUE



AVENUE C
[Right Turn Arrow]

AVENUE D
[Left Turn Arrow]

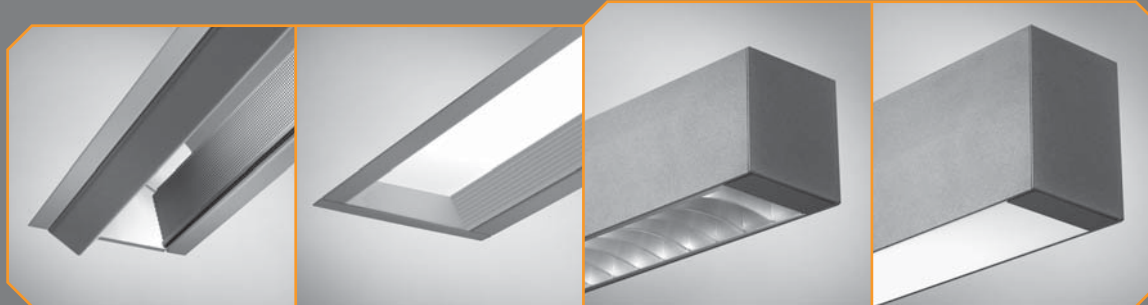
ONE WAY
[Right Arrow]

A
[Right Turn Arrow]
AVENUE

B
[Left Turn Arrow]
AVENUE

THIS IS AVENUE®

Avenue leads you down the road of flexibility to choose the lighting tool that best meets your design objectives. If clean narrow lines and soft visual appearance are what you desire, Avenue is the place to go. Offering a variety of shielding and trim options for any application, Avenue is the perfect blend of sophistication and versatility.



FEATURES

AVENUE® A

COMPACT WITH MORE IMPACT

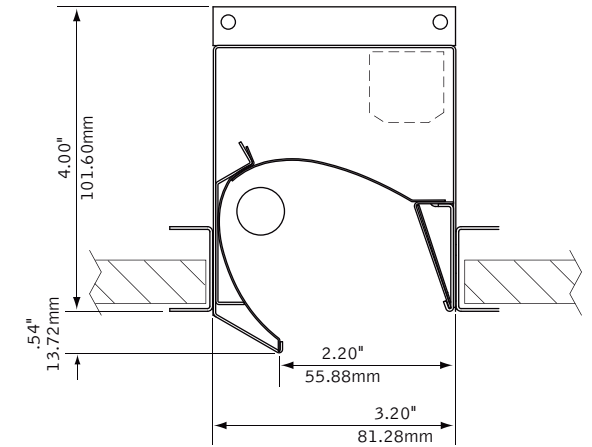
Harnessing the power of a single T5/T5H0 lamp, Avenue A utilizes a precision formed micro-optic that delivers high levels of vertical illumination and washes walls with shadow free light from top to bottom.

Avenue A can be recessed in the ceiling, suspended with cable, surface mounted or recessed in the wall.

The black perforated diffuser which minimizes lamp brightness and the 2" aperture allow Avenue A to disappear into its surroundings.

A cut-off louver or a clear lens may be specified on recessed and suspended versions.

Low voltage MR16 modules can be added to recessed Avenue A providing additional accent light.



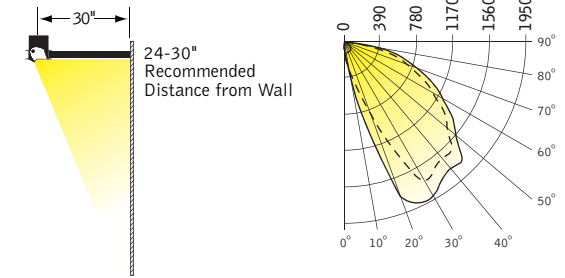
RECESSED CROSS SECTION

DIMENSIONAL DATA

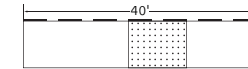


PHOTOGRAPHY: CRAIG DUGAN, HEDRICH BLESSING

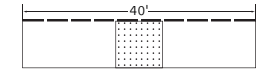
OFFICE CORRIDOR



(7) 4' Luminaires
6' O.C. | 9' Ceiling
42 Average F.C.
4:1 min/max ratio



(10) 4' Luminaires
Continuous Row | 9' Ceiling
62 Average F.C.
3.7:1 min/max ratio

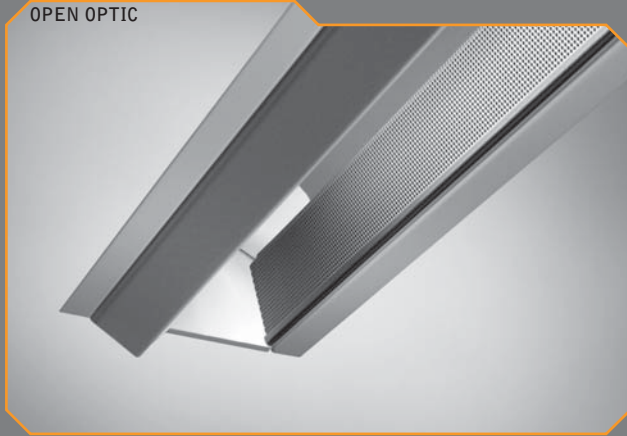


9'	56	61	60	55	49	49	56	61	61	56	83	83	83	82	82	83	83	83	
8'	65	70	69	64	58	57	64	69	69	64	96	97	96	96	96	96	96	97	96
7'	68	72	72	68	63	63	67	71	72	68	101	102	101	101	101	101	102	101	
6'	58	60	60	58	55	55	57	59	60	58	86	86	86	86	86	86	86	86	
5'	44	45	45	44	43	43	44	44	45	44	65	65	65	65	65	65	66	65	
4'	32	32	32	32	31	31	32	32	32	32	47	48	48	47	48	48	48	47	
3'	23	23	23	23	23	23	23	23	23	23	34	34	34	34	34	34	34	34	
2'	17	17	17	17	17	17	17	17	17	17	25	25	25	25	25	25	25	25	
1'	13	13	13	13	13	13	13	13	13	13	19	20	19	19	19	19	20	19	

Results based on AGI 32 | 20x40 Room | 30" from Wall
80/50/20 | LLF = .85 | 5000 Lumens/Lamp

PERFORMANCE

OPEN OPTIC



MR16
MODULE



RADIAL LOUVER

SUSPENDED
OR SURFACE

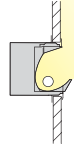
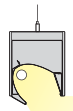
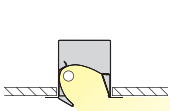


RECESSED WALL MOUNT

RECESSED

SUSPENDED
& SURFACE

RECESSED
WALL MOUNT



APPLICATION



Ms. DAVIS
Algebra

HOMWORK

Read chapter 8
Worksheet # 8.3

$$\frac{4(x+2)}{5} = 7 + \frac{5x}{13}$$

$$65 \times \frac{4(x+2)}{5} = 65 \times 7 + 65 \times \frac{5x}{13}$$

CLASSROOM

AVENUE® B SOPHISTICATED YET PRACTICAL

Avenue B provides thin lines of light in the ceiling that complement today's interior spaces.

Modular lay-in design allows simple installation in virtually any grid ceiling type.

Frosted satin lens is available in both flush and regress configurations.

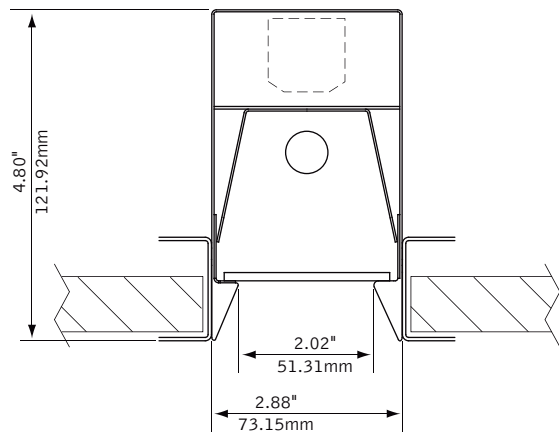
Regress trims are available with either a corrugated or smooth finish.

Specify the semi-specular parabolic louver for applications that require greater brightness control.

Low voltage MR16 accent lighting is a great option when objects in a space require added highlight.

FEATURES

DIMENSIONAL DATA



REGRESS TRIM WITH LENS CROSS SECTION



PHOTOGRAPHY: CRAIG DUGAN, HEDRICH BLESSING

REGRESS TRIM WITH LENS



PARABOLIC LOUVER



FLUSH LENS



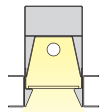
EXTENDED YOKE GIMBAL



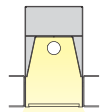
FLUSH GIMBAL



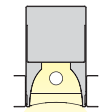
REGRESS TRIM WITH LENS



FLUSH LENS



PARABOLIC LOUVER



APPLICATION

RECEPTION AREA



PHOTOGRAPHY: CRAIG DUGAN, HEDRICH BLESSING

FEATURES

AVENUE® C & D CLEAN LINES & CRISP DETAILS

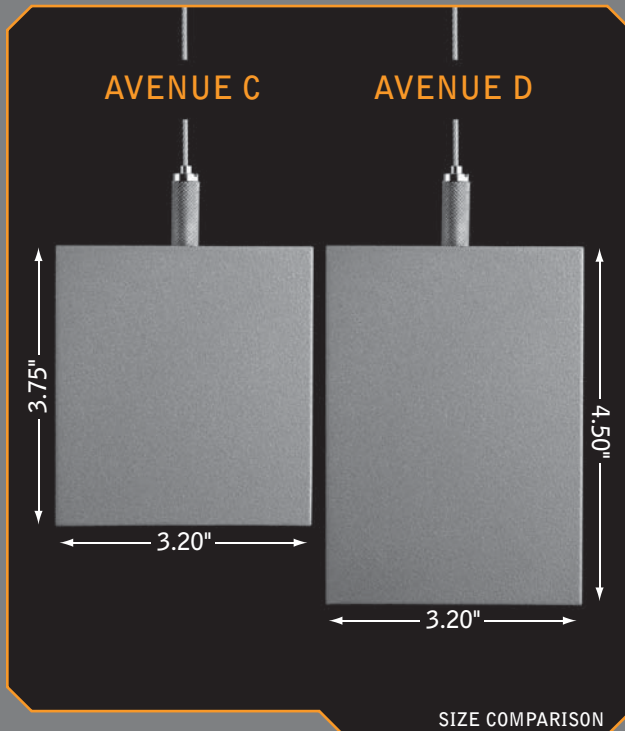
Avenue C and D deliver the clean style of Avenue's rectilinear aesthetic below the ceiling in an extruded aluminum housing.

At only 3.75" high, Avenue C offers either direct or indirect illumination in a miniature profile.

Avenue D, with its two-lamp optic, provides bi-directional illumination.

Shielding options include semi-specular parabolic louver or frosted opal white lens available in regress or flush mount configurations.

Accent lighting is easily achieved in Avenue D with adjustable MR16 lamp modules.

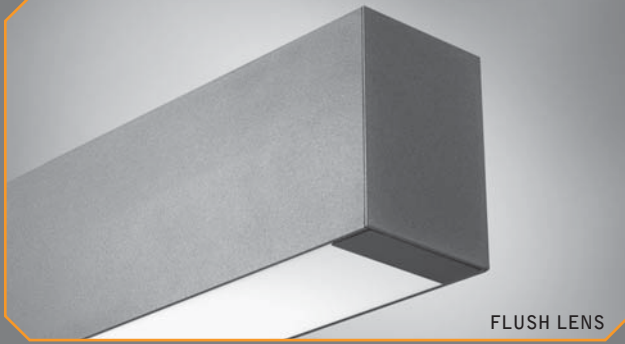


AVENUE C



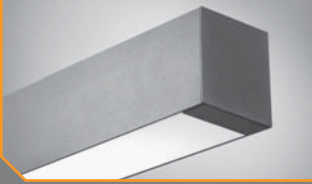
PARABOLIC LOUVER

AVENUE D

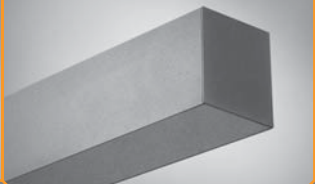


FLUSH LENS

FLUSH LENS



SOLID (INDIRECT)



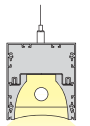
PARABOLIC LOUVER



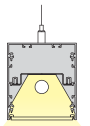
REGRESS TRIM WITH LENS



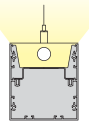
LINEAR SUSPENDED



PARABOLIC LOUVER



FLUSH LENS



SOLID (INDIRECT)

FLUSH GIMBAL



EXTENDED YOKE GIMBAL



PARABOLIC LOUVER



FLUSH LENS

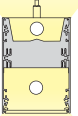


SOLID (INDIRECT)

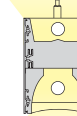


WALL MOUNT

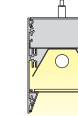
FLUSH LENS



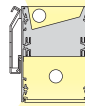
PARABOLIC LOUVER



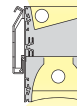
REGRESS TRIM WITH LENS



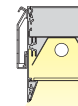
LINEAR SUSPENDED



FLUSH LENS



PARABOLIC LOUVER




























REGRESS TRIM WITH LENS

WALL MOUNT




















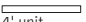


RECEPTION AREA

AVENUE A

Recessed Grid		Luminaire Series	Recessed	FAVA	Ballast	Electronic Program Start <10% THD	S	MR16	(50w max.)	Flush Mount	2FM			
			Recessed Wall Mount			FAVAW	Electronic Dimming Ballast		D		(Leave blank if no MR16)	Extended Yoke Gimbal	2EG	
			(3' & 4' lengths only)			FAVAS	(Consult factory for dimming availability)		Mounting		15/16" Grid		G1	
	Recessed Drywall						Shielding				No Shielding, Open Optic		NS	9/16" Grid
		Clear Lens	(Not available for recessed wall mount)	CL	9/16" Slot Tee		G3	Hex Louver		HL				
		Radial Cut-off Louver	(Louver painted white)	RL	Drywall Flange		F	Soft Focus Lens		SFL				
		(Not available for recessed wall mount)	(Available on 2', 3' & 4' lengths)	Lamping	24" Cable Suspension	C24	Linear Spread Lens	LSL						
MR16 Grid or Drywall		(MR16 lamps provided by others)	One Lamp T5		1T5	48" Cable Suspension	C48	Prismatic Spread Lens	PSL					
		One Lamp T5HO	1T5HO		96" Cable Suspension	C96	Sand Blasted Lens	SBL						
	Recessed Wall		Circuits		Single Circuit	1C	(Specify "J" in place of "C" for 5" dia. canopies at power feed and 2" dia. canopies at non-feed locations)		Factory Options	Finish	Matte White Housing	WH		
				Dual Circuit	2C	(Consult factory for sloped ceiling applications)		Matte Black Housing			BK			
Suspended or Surface				Voltage	120 Volt	120	Surface Mount	SM			(Cut-off louver painted Matte Satin White as standard.)			
					277 Volt	277	Chicago Plenum	CP			(Perforated diffuser always painted black)			
	Recessed Wall		347 Volt		347	Emergency Circuit	EC	Luminaire Length	2' Nominal Housing	2'				
			(Not available with MR16)		120 Volt	Emergency Battery Pack	EM		(Not available with MR16)	(Consult factory on suspended or surface mount versions)				
Suspended or Surface			277 Volt	277	(3' & 4' Fixtures Only)	EQ	3' Nominal Housing		3'					
			347 Volt	347	Seismic Brackets	FU	(Not available with MR16)		4' Nominal Housing	4'				
	Recessed Wall		Circuits	120 Volt	120	HLR/GLR Fuse	HLR/GLR	5' Nominal Housing	5'					
				Single Circuit	1C	Include 3000K Lamp	L830	(Not available on Recessed Wall Mount)						
		Dual Circuit		2C	Include 3500K Lamp	L835	(Consult factory on suspended or surface mount versions)							
		(MR16 circuit)		Voltage	120 Volt	120	Include 4100K Lamp	L841						
Suspended or Surface		277 Volt	277											
		347 Volt	347											
		(Not available with MR16)												
														

AVENUE B

Recessed Grid		Luminaire Series	Recessed	FAVB	Ballast	Electronic Program Start <10% THD	S	MR16	(50w max.)	Flush Mount	2FM					
			Recessed Wall Mount			Shielding	Corrugated Regress Trim with Lens		CR		Electronic Dimming Ballast	D	(Leave blank if no MR16)	Extended Yoke Gimbal	2EG	
			(3' & 4' lengths only)				Flush Lens		FL		(Consult factory for dimming availability)		Mounting		15/16" Grid	G1
	Recessed Drywall						Concave Parabolic Louver		PL		9/16" Grid	G2			MR16 Options	Snoot
		White Concave Parabolic Louver	PW	9/16" Slot Tee	G3		Hex Louver	HL								
		Lamping	(MR16 lamps provided by others)	One Lamp T5	1T5	Soft Focus Lens	SFL									
			One Lamp T5HO	1T5HO	48" Cable Suspension	C48	Linear Spread Lens	LSL								
MR16 Grid or Drywall			Circuits	Single Circuit	1C	96" Cable Suspension	C96	Prismatic Spread Lens	PSL							
				Dual Circuit	2C	(Specify "J" in place of "C" for 5" dia. canopies at power feed and 2" dia. canopies at non-feed locations)		Sand Blasted Lens	SBL							
	Recessed Wall			Voltage	120 Volt	120	Surface Mount	SM	Factory Options	Finish	Matte White Housing	WH				
					277 Volt	277	Chicago Plenum	CP			(Cut-off louver painted Matte Satin White as standard.)					
		347 Volt	347		Emergency Circuit	EC	(Perforated diffuser always painted black)									
		(Not available with MR16)	120 Volt		120	Emergency Battery Pack	EM	Luminaire Length			2' Nominal Housing	2'				
Suspended or Surface		277 Volt	277	(3' & 4' Fixtures Only)	EQ	3' Nominal Housing	3'									
		347 Volt	347	Seismic Brackets	FU	(Not available with MR16)	4' Nominal Housing		4'							
		HLR/GLR Fuse	HLR/GLR	Include 3000K Lamp	L830	(On MR16 version, 4' housing supplied with 3' fluorescent lamp.)	5' Nominal Housing		5'							
		Include 3500K Lamp	L835	Include 4100K Lamp	L841	(On MR16 version, 5' housing supplied with 4' fluorescent lamp.)										

Suspended, 
Surface, 
Wall Mount 

Consult factory
for custom lengths

Luminaire Series

Suspended/Surface **FAVCS** _____
Wall Mount **FAVCW** _____

Shielding

Flush Satin Lens **FL** _____
Concave Parabolic Louver **PL** _____
Indirect with Solid Housing **SD** _____

Lamping

One Lamp T5 **1T5** _____
One Lamp T5HO **1T5HO** _____

Circuits

Single Circuit **1C** _____

Voltage

120 Volt **120** _____
277 Volt **277** _____
347 Volt **347** _____

Ballast

Electronic Program Start <10% THD **S** _____
Electronic Dimming Ballast **D** _____
(Consult factory for dimming availability)

Mounting

24" Cable Suspension **C24** _____
48" Cable Suspension **C48** _____
96" Cable Suspension **C96** _____
(Specify "J" in place of "C" for 5" dia. canopies at power feed and 2" dia. canopies at non-feed locations)
(Consult factory for sloped ceiling applications)

Surface Mount **SM** _____
Wall Mount **WM** _____

Factory Options

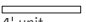


Clear Acrylic Dust Cover **DC** _____
Emergency Circuit **EC** _____
Emergency Battery Pack **EM** _____
HLR/GLR Fuse **FU** _____
Include 3000K Lamp **L830** _____
Include 3500K Lamp **L835** _____
Include 4100K Lamp **L841** _____

Finish


Matte White Housing **WH** _____
Titanium Silver **TS** _____


Luminaire Length

4' Nominal Housing **4'** _____
8' Nominal Housing **8'** _____
12' (8'+4') **12'** _____
16' (8'+8') **16'** _____
20' (8'+4'+8') **20'** _____
24' (8'+8'+8') **24'** _____

Suspended, 
Surface, 
Wall Mount 

MR16
(Example)


5' unit
(1) 4' fluorescent with
(2) MR16


7.5' unit
(2) 3' fluorescent with
(3) MR16

Consult factory
for custom lengths

Luminaire Series

Suspended/Surface **FAVDS** _____
Wall Mount **FAVDW** _____

Shielding

Corrugated Regress Trim with Lens **CR** _____
(Direct only)

Solid Regress Trim with Lens **SR** _____
(Direct only)

Flush Lens **FL** _____
Concave Parabolic Louver **PL** _____

Lamping

(MR16 lamps by others)

One Lamp T5 **1T5** _____
(Direct only)

One Lamp T5HO **1T5HO** _____
(Direct only)

One Lamp Up T5/One Lamp Down **11T5** _____
One Lamp Up T5HO/One Lamp Down **11T5HO** _____

Circuits

Single Circuit **1C** _____
Dual Circuit **2C** _____
Three Circuit **3C** _____

Voltage

120 Volt **120** _____
277 Volt **277** _____
347 Volt **347** _____
(Not available with MR16)

Ballast

Electronic Program Start <10% THD **S** _____
Electronic Dimming Ballast **D** _____
(Consult factory for dimming availability)

Mounting

24" Cable Suspension **C24** _____
48" Cable Suspension **C48** _____
96" Cable Suspension **C96** _____
(Specify "J" in place of "C" for 5" dia. canopies at power feed and 2" dia. canopies at non-feed locations)
(Consult factory for sloped ceiling applications)

Surface Mount **SM** _____
(Direct only)
(Not available with MR16)

Wall Mount **WM** _____
(Not available with MR16)

Factory Options

Clear Acrylic Dust Cover **DC** _____
Emergency Circuit **EC** _____
Emergency Battery Pack **EM** _____
HLR/GLR Fuse **FU** _____
Include 3000K Lamp **L830** _____
Include 3500K Lamp **L835** _____
Include 4100K Lamp **L841** _____

MR16

(50w max.)
(Leave blank if no MR16. MR16 location and
circuiting must be specified)

lamp qty. & gimbal type
(2FM = two MR16 with flush mount)
(Clear lens supplied)

Flush Mount **__FM** _____
Extended Yoke Gimbal **__EG** _____

MR16 Options

Snoot **SN** _____
Hex Louver **HL** _____
Soft Focus Lens **SFL** _____
Linear Spread Lens **LSL** _____
Prismatic Spread Lens **PSL** _____
Sand Blasted Lens **SBL** _____

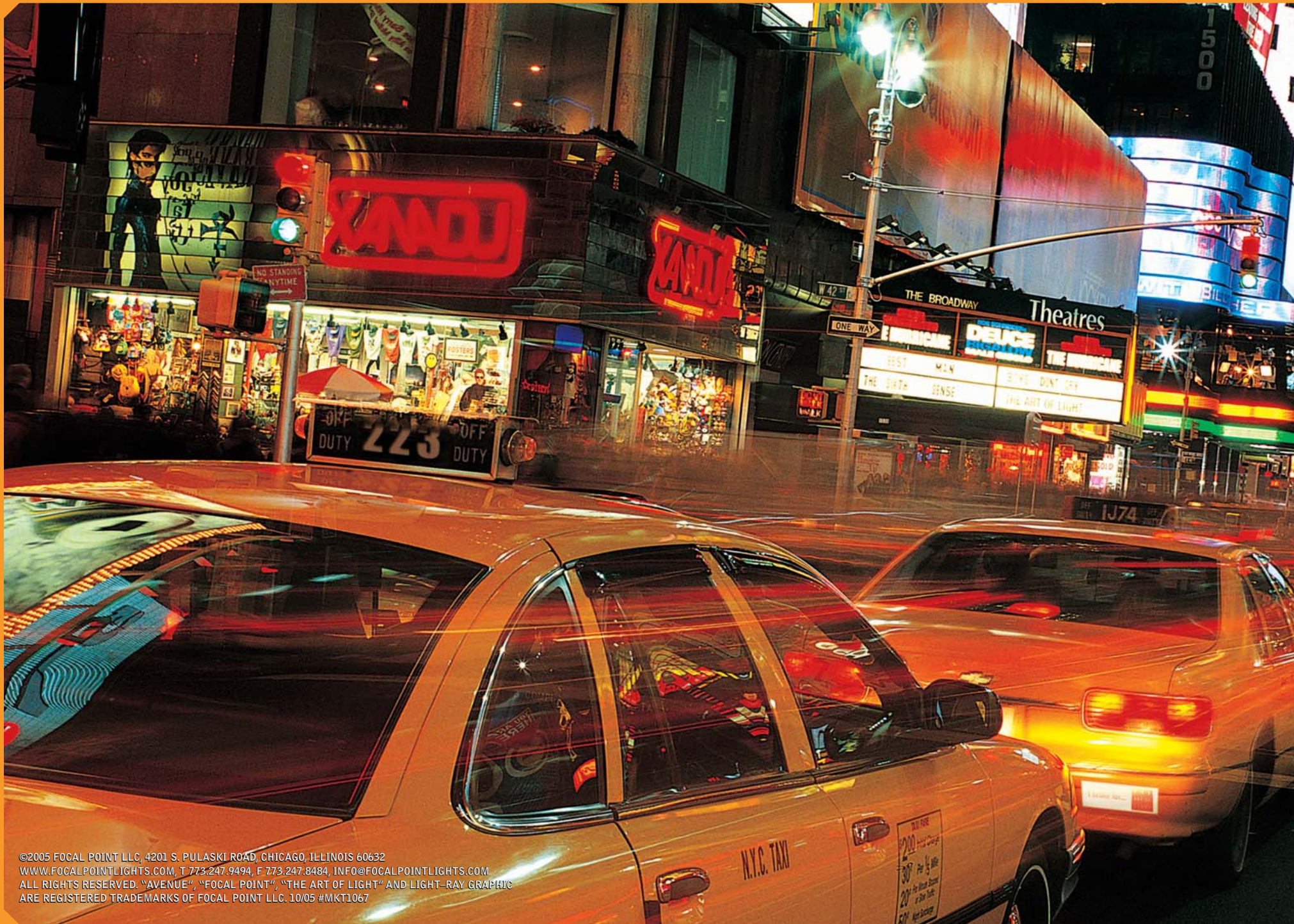
Finish

Matte White Housing **WH** _____
Titanium Silver **TS** _____

Fluorescent & MR16 Luminaire Length

(Each MR16 module adds 6" to overall length)

4' Nominal Housing **4'** _____
8' Nominal Housing **8'** _____
12' (8'+4') **12'** _____
16' (8'+8') **16'** _____
20' (8'+4'+8') **20'** _____
24' (8'+8'+8') **24'** _____



©2005 FOCAL POINT LLC, 4201 S. PULASKI ROAD, CHICAGO, ILLINOIS 60632
WWW.FOCALPOINTLIGHTS.COM, T 773.247.9494, F 773.247.8484, INFO@FOCALPOINTLIGHTS.COM
ALL RIGHTS RESERVED. "AVENUE", "FOCAL POINT", "THE ART OF LIGHT" AND LIGHT-RAY GRAPHIC
ARE REGISTERED TRADEMARKS OF FOCAL POINT LLC. 10/05 #MKT1067