

avenue[®] a



FEATURES

Narrow aperture high performance T5/T5HO asymmetric wall wash.

Precision micro-optic delivers shadow free illumination from the ceiling to the floor.

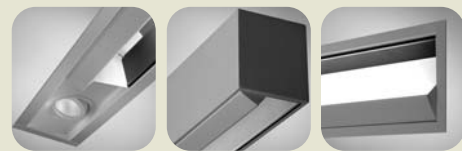
Features 2" narrow aperture for clean unobtrusive aesthetic.

Universal mounting allows compatibility for multiple grid types.

Drywall installation is available, which allows for both individual or continuous row mount capability.

Great solution for conference rooms, highlighting artwork, corridors, white board or any application that requires high levels of vertical illumination.

companion luminaire



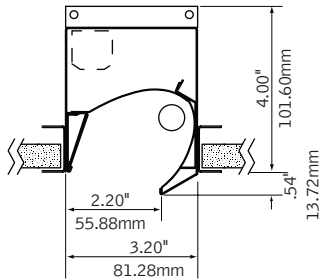
mr16

linear

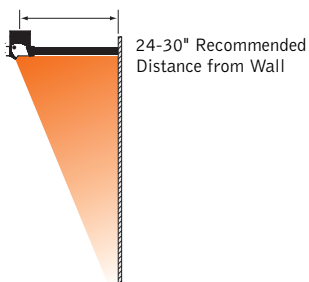
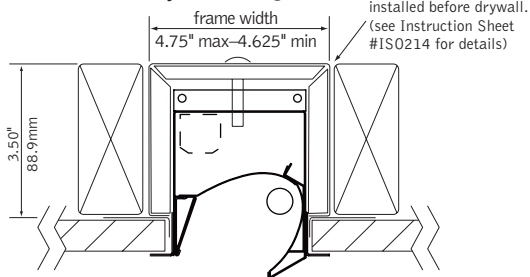
recessed wall mount

DIMENSIONAL DATA

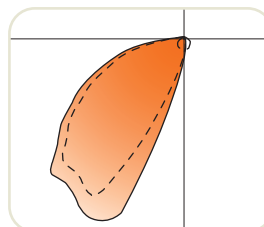
Grid Mount



Drywall Flange



PERFORMANCE



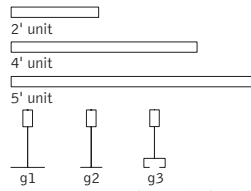
1-Lamp T5HO
57% Efficiency
1933 cd @ 25°

See **Photometric** section for additional performance data.

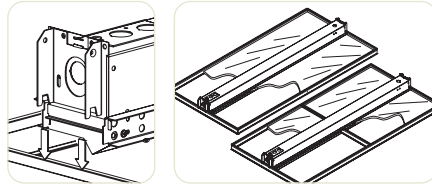
fixture type:
project name:

DETAILS

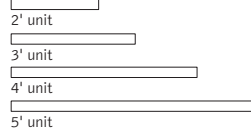
grid



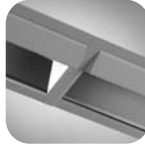
Luminaires cannot be installed in T-bar ceiling systems over 1.5'.



drywall



Drywall flange version provided with mounting yoke.



row mount
detail

SPECIFICATIONS

construction

One-piece 20 Ga. steel housing

Grid luminaires include 20 Ga. steel, .5" wide universal flange rail finished in matte satin white.

Drywall flange option is provided with 20 Ga. steel, .5" wide flange kit and 20 Ga. galvanized steel mounting yoke.

2' unit weight:	5 lbs.
3' unit weight:	6 lbs.
4' unit weight:	7 lbs.
5' unit weight:	8 lbs.

optic

.020" specular aluminum upper reflector and .020" semi-specular lower reflector.
24 Ga. perforated matte black diffuser with 24% opening.

electrical

Luminaires are individually wired for specified circuits.

Thru-wiring not available.

Electronic ballasts are thermally protected and have a Class "P" rating.

Optional DALI and other dimming ballasts available.

Consult factory for dimming specifications and availability.

UL and cUL listed.

emergency

Emergency battery packs provide 90 minutes of illumination.

Initial lumen output for lamp types are as follows:

T5 Lamp:	Up to 550 lumens
T5HO Lamps:	Up to 825 lumens

Battery pack requires unswitched hot from same branch circuit as AC ballast.

finish

Polyester powder coat applied over a 5-stage pre-treatment.

Standard luminaire housing finished in Matte Satin White or Matte Black.

Perforated diffuser finished in Matte Black as standard.

ORDERING

luminaire series FAVA
Avenue A FAVA

shielding _____
No Shielding, Open Optic NS

lampping _____
One Lamp T5 1T5
One Lamp T5HO 1T5HO

circuits 1C
Single Circuit 1C

voltage _____
120 Volt 120
277 Volt 277
347 Volt 347
(Consult factory for availability)

ballast _____
Electronic Program Start <10% THD S
Electronic Dimming Ballast D
(Consult factory for dimming availability)

mounting _____
15/16" Grid G1
9/16" Grid G2
9/16" Slot Tee G3
Drywall Flange F
Cut out dimensions:
2': 3.5" x 23.6"
3': 3.5" x 35.6"
4': 3.5" x 47.6"
5': 3.5" x 59.6"

factory options _____
Chicago Plenum CP
Emergency Circuit EC
Emergency Battery Pack EM
(3' & 4' Luminaires Only)
Seismic Brackets EQ
HLR/GLR Fuse FU
Include 3000K Lamp L830
Include 3500K Lamp L835
Include 4100K Lamp L841

finish _____
Matte White Housing WH
Matte Black Housing BK
(Perforated diffuser always painted black)

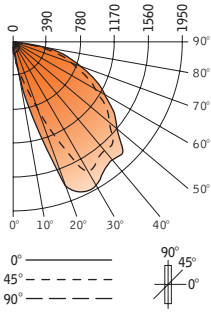
luminaire length _____
2' Nominal Housing 2'
3' Nominal Housing 3'
4' Nominal Housing 4'
5' Nominal Housing 5'
(Dimming not available with 5' lamps)
(For continuous row mount in drywall ceiling, specify luminaire run length, ie 24')

avenue® a



Filename: FAVANS1T5H.IES
 Catalog #: FAVA-NS-1T5H0-1C-120-S-G-WH-4'
 Efficiency: 57%
 Test #: 12355.0

CANDLEPOWER DISTRIBUTION



Vertical Angle	Horizontal Angle				Zonal Lumens
	0°	22.5°	45°	67.5°	
0°	108	108	108	108	108
5°	276	256	214	154	101
15°	919	771	499	291	102
25°	1933	1873	1300	415	101
35°	1832	1799	1695	707	96
45°	1806	1775	1647	1296	88
55°	1434	1416	1329	1108	74
65°	1072	1052	962	811	56
75°	655	631	568	458	39
85°	317	294	224	129	14
90°	183	165	112	40	2
95°	0	0	0	0	0
105°	0	0	0	0	0
115°	0	0	0	0	0
125°	0	0	0	0	0
135°	0	0	0	0	0
145°	0	0	0	0	0
155°	0	0	0	0	0
165°	0	0	0	0	0
175°	0	0	0	0	0
180°	0	0	0	0	0

LUMEN SUMMARY

Zone	Lumens	% Lamp	% Fixt	
0°-30°	376	7.5	13.2	
0°-40°	784	15.7	27.4	
0°-60°	1975	39.5	69.0	
0°-90°	2861	57.2	100.0	
Total Luminaire	0°-180°	2861	57.2	100.0

Go to www.focalpointlights.com for additional photometric data.