

Job Name: _____

Type: _____

Order Number: _____

LN16 Series 12V MR16



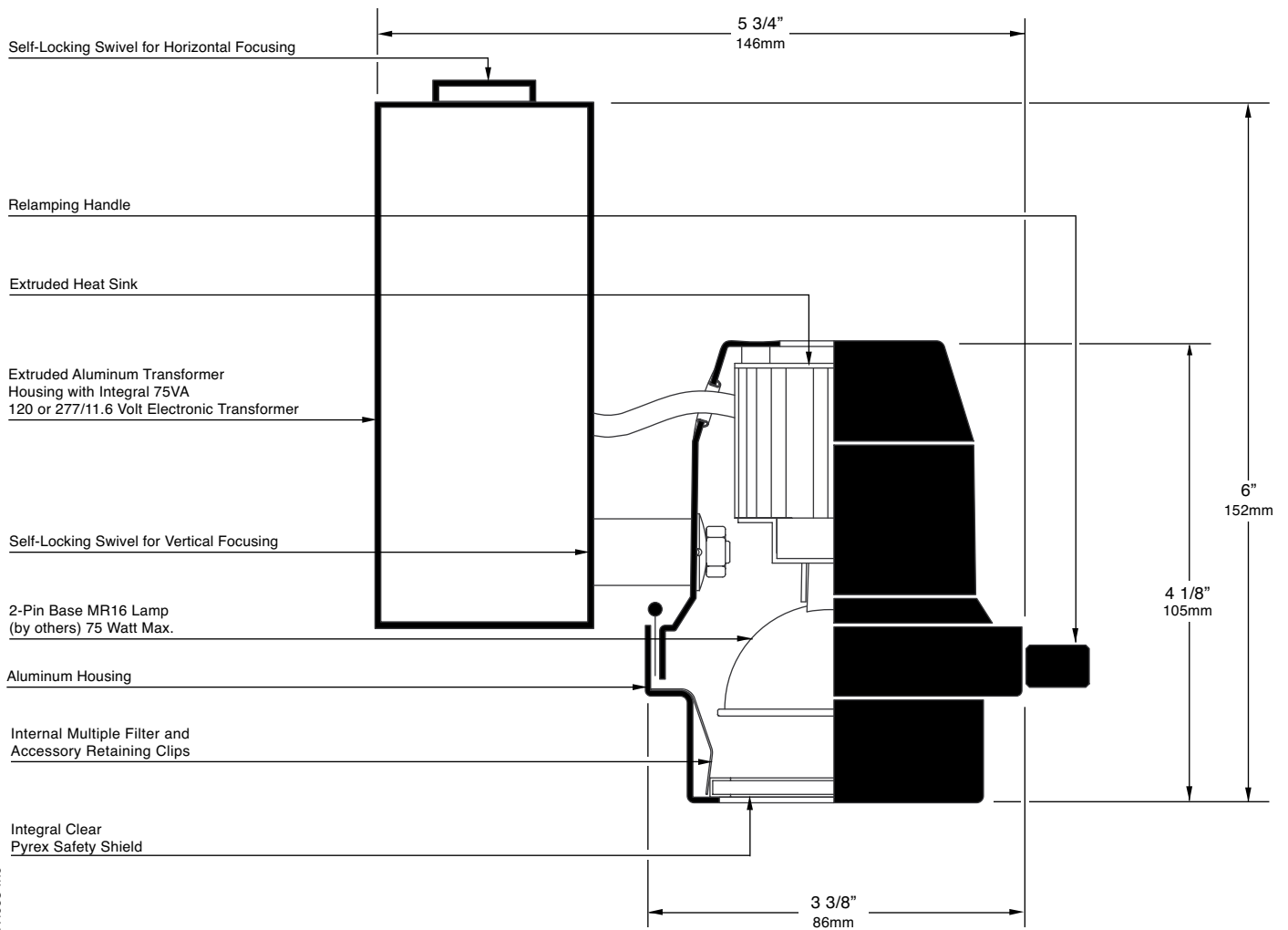
The LN16 spotlight is a clean understated fixture design that will harmoniously blend into practically all architectural spaces. The user-friendly hinged front is easily opened for lamp changing, and for easily accepting any combination of the entire range of LSI size AAA accessories.

The LN16 unit will accommodate all the energy efficient Tungsten Halogen MR16 lamps from 20 to 75 watts in a wide variety of beam spreads. These lamps give excellent color rendition and produce a more efficient whiter brighter light than standard incandescent lamps, with longer life and less heat emission.

All units are adjustable and self-locking in all horizontal and vertical planes and are available with all LSI mounting fittings in standard LSI Black, White, Silver, Graphite, and Platinum finishes.

UL and CUL Listed
USA Manufactured /IBEW

LN16-00 (120V)
VLN16-00 (277V)

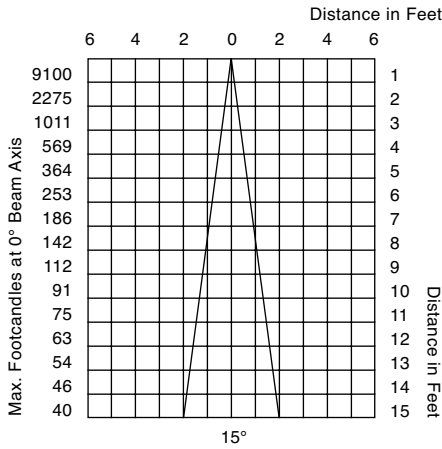


© 1996 Lighting Services Inc

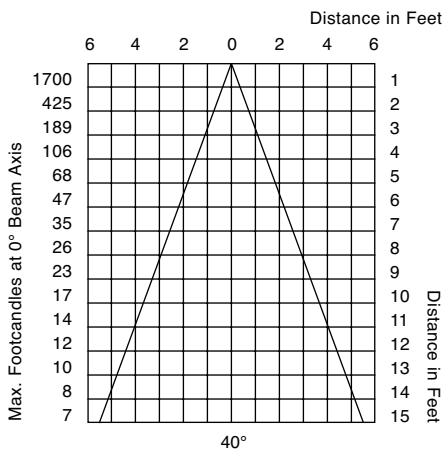
LN16 Series 12V MR16

Photometric Data⁵

Q50MR16/C/NSP15° 50 watt/12 volt
Narrow Spot/3050K
Beam Spread to 50% of CBCP 15°
Center Beam Candlepower 9100



Q50MR16/C/FL40° 50 watt/12 volt
Flood/3050K
Beam Spread to 50% of CBCP 40°
Center Beam Candlepower 1700



Lamp Types (see notes)

Q20MR16/C/VNSP7° 20 watt/12 volt 3000 hours
Beam Spread to 50% of CBCP 7°
Center Beam Candlepower 7400
Color Temperature 2900K

Q20MR16/C/NSP15° 20 watt/12 volt 5000 hours
Beam Spread to 50% of CBCP 15°
Center Beam Candlepower 3750
Color Temperature 2900K

Q20MR16/C/FL40° 20 watt/12 volt 5000 hours
Beam Spread to 50% of CBCP 40°
Center Beam Candlepower 525
Color Temperature 2900K

Q35MR16/C/SP20° 35 watt/12 volt 5000 hours
Beam Spread to 50% of CBCP 20°
Center Beam Candlepower 3900
Color Temperature 3000K

Q35MR16/C/NFL40° 35 watt/12 volt 5000 hours
Beam Spread to 50% of CBCP 40°
Center Beam Candlepower 1000
Color Temperature 3000K

Q42MR16/C/VNSP9° 42 watt/12 volt 3500 hours
Beam Spread to 50% of CBCP 9°
Center Beam Candlepower 12300
Color Temperature 3000K

Q50MR16/C/NSP15° 50 watt/12 volt 6000 hours
Beam Spread to 50% of CBCP 15°
Center Beam Candlepower 9100
Color Temperature 3050K

Q50MR16/C/NFL25° 50 watt/12 volt 6000 hours
Beam Spread to 50% of CBCP 25°
Center Beam Candlepower 3200
Color Temperature 3050K

Q50MR16/C/NFL30° 50 watt/12 volt 6000 hours
Beam Spread to 50% of CBCP 30°
Center Beam Candlepower 2500
Color Temperature 3050K

Q50MR16/C/FL40° 50 watt/12 volt 6000 hours
Beam Spread to 50% of CBCP 40°
Center Beam Candlepower 1700
Color Temperature 3050K

Q50MR16/C/WFL55° 50 watt/12 volt 6000 hours
Beam Spread to 50% of CBCP 55°
Center Beam Candlepower 900
Color Temperature 3050K

Q71MR16/C/NSP15° 71 watt/12 volt 4000 hours
Beam Spread to 50% of CBCP 15°
Center Beam Candlepower 11500
Color Temperature 3050K

Q71MR16/C/NFL25° 71 watt/12 volt 4000 hours
Beam Spread to 50% of CBCP 25°
Center Beam Candlepower 5500
Color Temperature 3050K

Q71MR16/C/FL40° 71 watt/12 volt 4000 hours
Beam Spread to 50% of CBCP 40°
Center Beam Candlepower 2200
Color Temperature 3050K

Accessories

Louver Hex AAA
Hexcell metal louver, controls spill light and glare, 45° cutoff, black finish.

Hood AAA
1" deep cylindrical hood, controls spill light and glare, black interior.

Cross Baffle AAA
1" deep cylindrical cross baffle hood, controls spill light and glare, black interior.

Hood Sparkle AAA
1" deep cylindrical hood, controls spill light and glare, with decorative sparkle effect.

Glass Color Filters, Size AAA
Selection of 95 permanent rimmed dichroic and rimmed and slotted standard colors.

Spread Lens AAA990
Permanent glass lens for spreading light beam in one axis, 5°X 50°, rimmed and slotted for heat expansion.

Spread Lens AAA992
Permanent molded glass lens for spreading light beam in one axis—nominal 5°X 30°.

Spread Lens AAA995
Permanent molded glass lens for spreading light beam in all directions—nominal 50°X 50°.

Spread Lens AAA996
Permanent molded glass lens for spreading light beam in one direction slightly more than the other—nominal 45°X 50°.

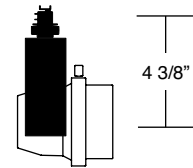
Beam Softener AAA998
Permanent glass lens for conditioning light to create a softer beam.

OPTIVEX™ UV Blocking Filter AAA962
Eliminates ultra-violet wavelengths below 410±10nm. Especially useful for conservation of artworks and to help prevent fading.

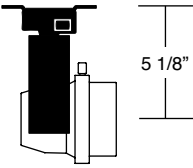
Ordering Information

Model Number
add prefix **V** for 277 Volt
add suffix letters for finish

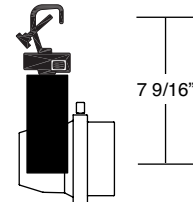
LN16-00
Lexan Fitting for
1 and 2 circuit
LSI Track.
With switch.



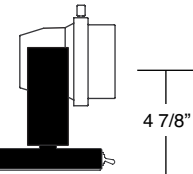
LN16-2G
Universal fitting for
Unistrut Systems and
any screw or bolt-up
applications. With
switch, 6-foot
3-wire grounding
cord and plug.



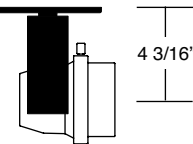
LN16-3G
C-clamp for pipes
from 5/8" to 2"
O.D. With switch,
6-foot 3-wire
grounding cord
and plug.



***LN16-4G**
Cushioned weighted
base for floor or table
use. With switch,
6-foot 3-wire grounding
cord and plug.



LN16-5A
Canopy for
permanent mounting
on standard 4" octag-
onal outlet boxes.



Light Blocking Screens, Size AAA

AAA801-20% Light Blocking, AAA802-30% Light Blocking, AAA803-40% Light Blocking Stainless Steel Screens. Used individually or in combination to reduce transmitted light without changing its color temperature.

Coiled Cord

18/3 105°C, 18" retracted, 6 foot extended. Specify by adding suffix **CC** to model number. White fixture supplied with white cord, all other finishes supplied with black cord.

Wrench Locking

For permanent locking of fixture position, add "WL" to model number.

Finishes (Paint)

Black (suffix B)
White (suffix W)
Silver (suffix S)
Graphite (suffix G)
Platinum (suffix P)

Notes:

1. CBCP = Center Beam Candlepower
 2. K = Color Temperature in Kelvin degrees
 3. /C/ = Constant Color
 4. OPTIVEX™ glass is a trademark of Bausch & Lomb Inc.
 5. Lamp manufacturers published data.
- *Non-UL and CUL