



## SD<sup>x</sup> P-S/D-1800

The SD<sup>x</sup> family combines a small-scale extruded aluminum housing with a choice of four distinctive baffle and end cap designs. The upper housing has an elegant grooved pattern that captures some of the uplight to add visual interest to the fixture and the space. SD<sup>x</sup> fixtures provide a semi-direct distribution to efficiently achieve light level goals while providing enough ceiling brightness to make the space interesting and pleasant.



Healthcare



Laboratories

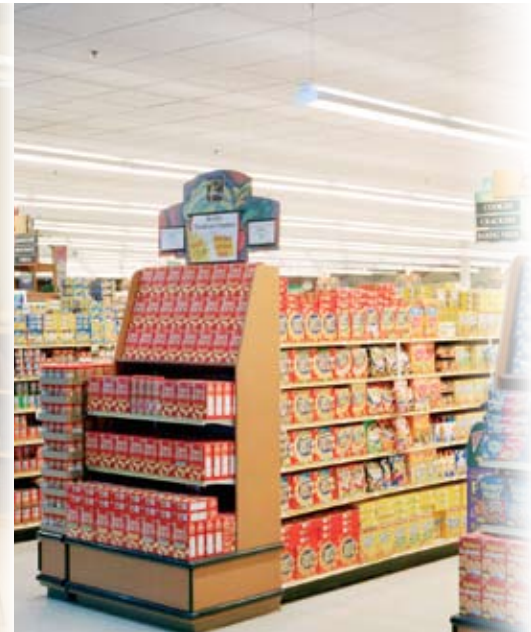


Libraries



Retail

LITECONTROL



Charles Mayer Photography



## Design elements

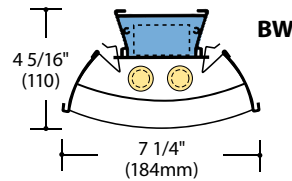
- Four baffle style choices
- Sculpted end cap to match baffle profile and housing
- 10-20% uplight to balance brightness in the space
- Sliding pendant bracket for mounting and row joining
- Slide-on baffle alignment splines
- Fixture lengths up to twelve feet
- Contractor-friendly features including sliding pendant brackets for ease of mounting and row joining, slide-on baffle alignment splines, and tool-less installation and removal of baffles for easy lamp access
- Cradle to Cradle Certified<sup>CM</sup> Silver by MBDC

## Lamping options

- T8, T5 or T5HO lamping in 1- or 2-lamp cross-sections

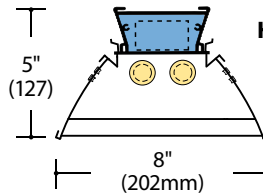


## Four unique designs



**BW**

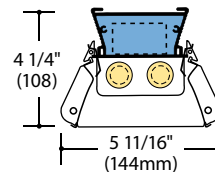
“Retro style”  
Wide distribution  
white blade baffles



**HPB**

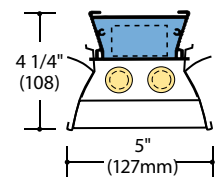
“Performance Style”  
High performance reflector/  
baffle combination

**New**



**PBACRG**

“Radiant-edge style”  
Acrylic baffles  
tinted green



**PBSS**

“Technical style”  
Narrow distribution  
parabolic baffles

© 2009 LITECONTROL, Printed in U.S.A./PS10116-00  
Cradle to Cradle Certified<sup>CM</sup> is a certification mark of MBDC.