

Catalog Number	
Notes	Type

## FEATURES & SPECIFICATIONS

**INTENDED USE** — High performance parabolic luminaires for use in open area applications and electronic offices where optical control, visual comfort and light cut-off are important.

**ATTRIBUTES** — Designed for use with T5 lamps and low-profile electronic ballasts.

Choice of diffuse or specular louvers utilizing the latest developments in louver finishing for minimized louver iridescence.

**CONSTRUCTION** — Black reveal provides floating louver appearance, conceals optional air-supply slots.

Square corner end plates improve strength and durability.

Integral T-bar safety clips hold fixture to T-bar securely; no fasteners required.

Heavy-gauge hinges die-formed for maximum strength; spring action latches concealed in black reveal.

Housing formed from cold-rolled steel. Louver formed from anodized aluminum. No asbestos used in this product.

Overlapping flange and modular ceiling trims available factory installed with swing gate hangers or field convertible with optional trim and hangers.

**FINISH** — Five-stage iron-phosphate pretreatment ensures superior paint adhesion. Painted parts finished with high-gloss, baked white enamel.

**ELECTRICAL SYSTEM** — Thermally-protected, resetting, Class P, HPF, non-PCB, UL Listed, CSA certified ballast is standard.

Electronic ballasts are sound rated A.

Fixture conforms to UL1570 and is suitable for damp locations. AWM, TFN or THHN wire used throughout, rated for required temperatures.

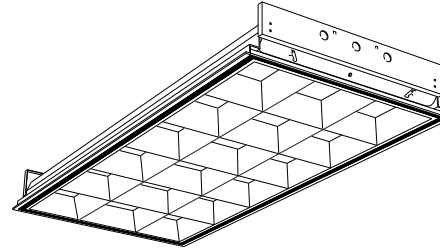
Ballast disconnect provided standard where required to comply with US and Canadian electrical codes.

**LISTING** — UL Listed (Standard), CSA Certified or NOM Certified (see Options).

**WARRANTY** — Guaranteed for one year against mechanical defects in manufacture.

**PARAMAX® Parabolic Troffer**

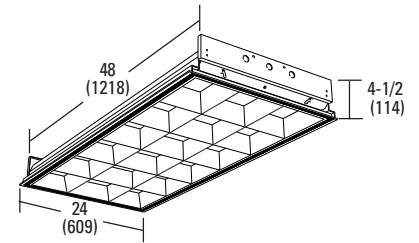
# 2PM3N 2'x4'



3" Louver Family  
T5 Lamps

### Specifications

Length: 48 (1218)  
Width: 24 (609)  
Depth: 4-1/2 (114)  
Weight: 32 lbs (14.5 kg)



All dimensions are inches (millimeters). Specifications subject to change without notice.

## ORDERING INFORMATION

For shortest lead times, configure product using **standard options (shown in bold)**.

Example: 2PM3N G B 3 28T5 18LD MVOLT GEB10PS

2PM3N		28T5		GEB10PS		Options <sup>4</sup>	
Series	Number of lamps	Lamp type	Voltage	Ballast			
<b>2PM3N Paramax 3" louver family</b>	<b>2</b> 3 4 Not included.	<b>28T5 28W T5 (46")</b>	<b>MVOLT<sup>2</sup></b> 120 277 347	<b>GEB10PS Program start, 1.0 ballast factor</b>	<b>EL14 Emergency battery pack</b>		
				GEB95 Program start, 0.95 ballast factor	<b>PWS1836 6' prewire, 3/8" dia., 18-gauge, 1 circuit</b>		
				GEB115 Program start, 1.15 ballast factor	<b>PWS1846 6' prewire, 3/8" dia., 18-gauge, 2 circuits</b>		
				GEB95S Program start, 0.95 ballast factor, step dimming	<b>QFC313 RELOC® QUICK-FLEX® 12/3G, 13<sup>5,6</sup></b>		
				GEB115S Program start, 1.15 ballast factor, step dimming	<b>LP835 3500°K lamp</b>		
				S5 SIMPLY5™ system <sup>3</sup>	<b>LP835P Premier 3500°K lamp</b>		
<b>Trim type</b>	<b>Air function</b>	<b>Number of cells<sup>1</sup></b>	<b>Louver finish</b>		<b>GLR Internal fast-blow fuse<sup>5</sup></b>		
<b>G Grid</b>	<b>B No air function</b>	<b>12</b>	<b>LD Low iridescent anodized diffuse silver</b>		<b>ACS Air closure strips (A and D models only)</b>		
F Overlapping flange	A Air supply/return (slots in side trim)	<b>18</b>	LS Low iridescent anodized specular silver		<b>APB Air-pattern control blades (A and D models only)</b>		
ST Screw slot	D Dual function supply/return/removal	<b>32</b>			<b>PAF Painted after fabrication (white enamel)</b>		
		16			<b>2R Two reflector channel covers<sup>7</sup></b>		
		24			<b>JP Palletized and stretch-wrapped (G trim only)</b>		
					CSA CSA Certified		
					NOM NOM Certified		

### NOTES:

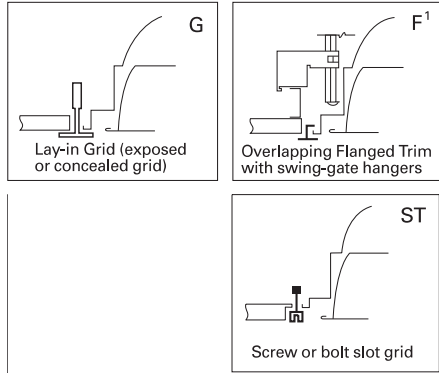
- Standard louver configuration:  
2 lamps = 12 cells, diffuse silver  
3 lamps = 18 cells, diffuse silver  
4 lamps = 32 cells, diffuse silver
- MVOLT standard for 120V and 277V applications. Some options require voltage specified.
- Available with two-lamp or four-lamp versions only.
- SIMPLY5™ system includes 13' S5 RELOC wiring system. Specify voltage unless hardware (HW) or PSW1836 is ordered.
- Some options increase fixture depth. Consult factory if plenum space is a concern.
- Must specify voltage.
- Must specify circuit wiring. Refer to [www.lithonia.com/Reloc](http://www.lithonia.com/Reloc) for additional information.
- Available with 3-lamp 18 or 24 cell only.

# 2PM3N 2'x4' 28W T5 Lamps, 3" Louver Family

## MOUNTING DATA

Continuous row mounting of flanged units requires CRE and CRM trim options. Consult factory.

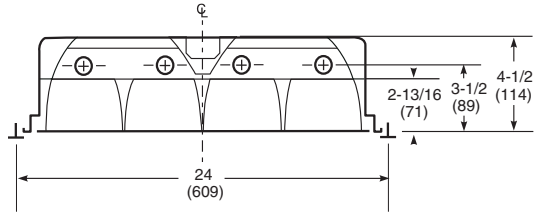
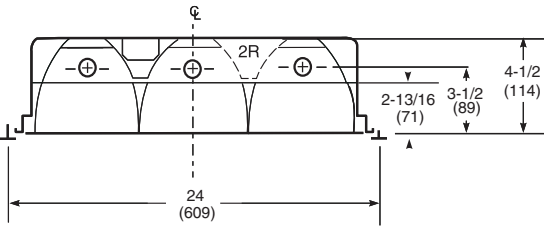
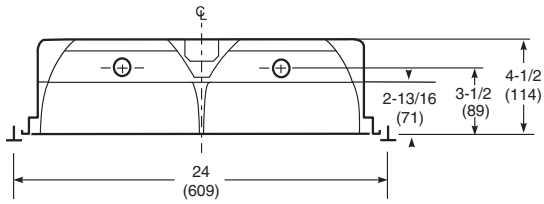
Ceiling Type	Appropriate Trim Type
Exposed grid tee	G
Concealed grid tee	G, ST
Concealed Z-spline	F
Screw slot (consult factory)	ST
Acoustical tile, plaster or plasterboard on rigid support parallel to lamps	F



**NOTE:**

1 Recommended rough-in dimensions for F trim fixtures 24"x48" (Tolerance is +1/4", -0"). Swing-gate range 1-7/16" to 3-7/16", span 23-1/2" to 26-7/16".

## DIMENSIONS



## PHOTOMETRICS

Calculated using the zonal cavity method in accordance with IESNA LM41 procedures. Floor reflectances are 20%. Lamp configurations shown are typical. Full photometric data on these and other configurations available upon request.

### Energy (Calculated in accordance with NEMA standard LE-5)

LER.FP	ANNUAL ENERGY COST <sup>1</sup>	LAMP DESCRIPTION	LAMP LUMENS <sup>2</sup>	BALLAST FACTOR	WATTS
73 (LD louver)	\$3.29	(2) 28WT5	2900	1.0	63
71 (LD louver)	\$3.39	(3) 28WT5	2900	1.0	95
63 (LD louver)	\$3.81	(4) 28WT5	2900	1.0	126

1 Comparative yearly lighting energy cost per 1000 lumens.  
2 Lamp lumens at 35°C.

**TEST NO: LTL17087**

LUMINAIRE CATALOG NO.: 2PM3N G B 2 28T5 12LD MVOLT OSPS  
LUMENS PER LAMP: 2600

RCP	Coefficients of Utilization												
	20%				70%				50%				
	pc	80%	30%	10%	50%	30%	10%	50%	30%	10%	50%	30%	10%
0	94	94	94	92	92	92	88	88	88	88	88	88	88
1	84	81	79	82	80	77	79	77	75	75	75	75	75
2	74	69	65	73	68	64	70	66	63	63	63	63	63
3	65	59	54	64	59	54	62	57	53	53	53	53	53
4	58	51	46	57	51	46	55	49	45	45	45	45	45
5	52	45	40	51	44	39	49	43	39	39	39	39	39
6	46	39	34	45	39	34	44	38	34	34	34	34	34
7	42	35	30	41	35	30	40	34	30	30	30	30	30
8	38	31	27	37	31	27	36	31	26	26	26	26	26
9	35	28	24	34	28	24	33	28	24	24	24	24	24
10	32	26	22	31	25	21	31	25	21	21	21	21	21

Zonal Lumen Summary			
Zone	Lumens	% Lamp	% Fixture
0° - 30°	1120.6	21.5	27.2
0° - 40°	1886.4	36.3	45.8
0° - 60°	3648.2	70.2	88.5
0° - 90°	4122.9	79.3	100.0
90° - 180°	0.0	0.0	0.0
0° - 180°	4122.9	79.3	100.0

**TEST NO: LTL17101**

LUMINAIRE CATALOG NO.: 2PM3N G B 3 28T5 18LD MVOLT OSPS  
LUMENS PER LAMP: 2600

RCP	Coefficients of Utilization												
	20%				70%				50%				
	pc	80%	30%	10%	50%	30%	10%	50%	30%	10%	50%	30%	10%
0	92	92	92	90	90	90	86	86	86	86	86	86	86
1	83	80	78	81	78	76	78	76	74	74	74	74	74
2	73	69	65	72	68	64	69	66	63	63	63	63	63
3	65	60	55	64	59	55	62	58	54	54	54	54	54
4	58	52	48	57	52	47	56	51	47	47	47	47	47
5	52	46	41	52	46	41	50	45	41	41	41	41	41
6	47	41	36	47	40	36	45	40	36	36	36	36	36
7	43	37	32	42	36	32	41	36	32	32	32	32	32
8	39	33	29	39	33	28	38	32	28	28	28	28	28
9	36	30	26	35	30	26	35	29	25	25	25	25	25
10	33	27	23	33	27	23	32	27	23	23	23	23	23

Zonal Lumen Summary			
Zone	Lumens	% Lamp	% Fixture
0° - 30°	1859.8	23.8	30.9
0° - 40°	3136.5	40.2	52.1
0° - 60°	5535.0	71.0	91.9
0° - 90°	6023.2	77.2	100.0
90° - 180°	0.0	0.0	0.0
0° - 180°	6023.2	77.2	100.0

**TEST NO: LTL17110**

LUMINAIRE CATALOG NO.: 2PM3N G B 4 28T5 32LD MVOLT OSPS  
LUMENS PER LAMP: 2600

RCP	Coefficients of Utilization												
	20%				70%				50%				
	pc	80%	30%	10%	50%	30%	10%	50%	30%	10%	50%	30%	10%
0	81	81	81	80	80	80	76	76	76	76	76	76	76
1	74	71	69	72	70	68	69	67	66	66	66	66	66
2	66	62	59	65	61	58	62	59	57	57	57	57	57
3	59	54	50	58	53	50	56	52	49	49	49	49	49
4	53	48	44	52	47	43	50	46	43	43	43	43	43
5	48	42	38	47	42	38	45	41	37	37	37	37	37
6	43	38	34	42	37	33	41	37	33	33	33	33	33
7	39	34	30	39	33	30	38	33	30	30	30	30	30
8	36	30	27	35	30	27	35	30	26	26	26	26	26
9	33	28	24	33	27	24	32	27	24	24	24	24	24
10	30	25	22	30	25	22	29	25	22	22	22	22	22

Zonal Lumen Summary			
Zone	Lumens	% Lamp	% Fixture
0° - 30°	2426.7	23.3	34.1
0° - 40°	4001.8	38.5	56.2
0° - 60°	6675.2	64.2	93.8
0° - 90°	7116.3	68.4	100.0
90° - 180°	0.0	0.0	0.0
0° - 180°	7116.3	68.4	100.0