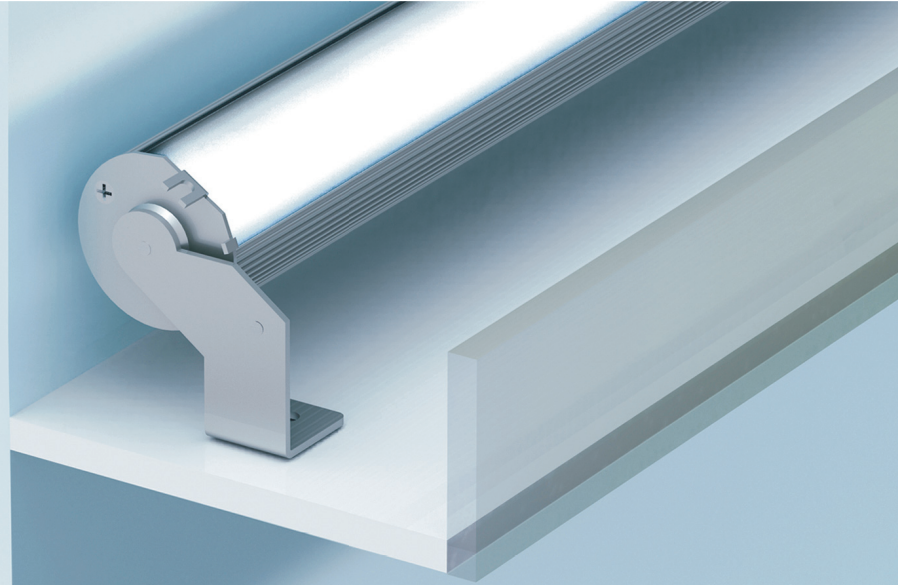


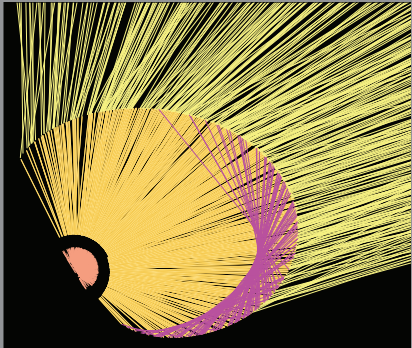
Style S305



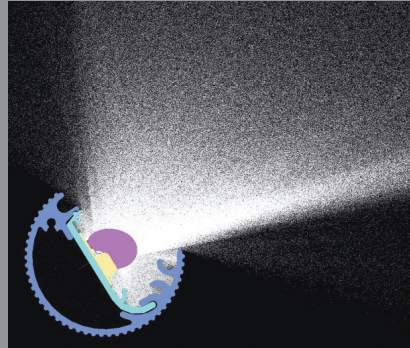
Style S301

fraqtir™ LED for cove applications

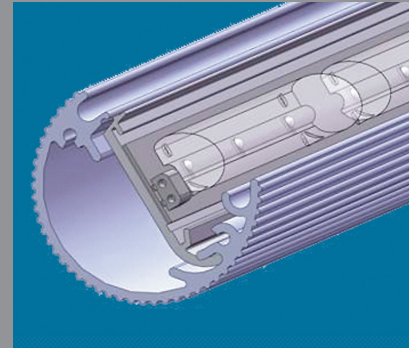
fracqtir™ LED for cove applications



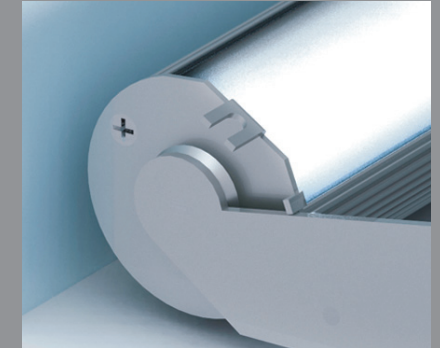
- Innovative linear refractor uses principles of refraction and total internal reflection.
- Produces an asymmetric distribution ideal for illuminating surfaces uniformly from one edge.
- Light output —300 lumens per foot standard or 500 lumens per foot high output.



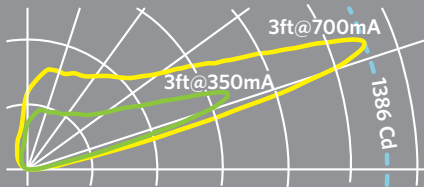
- Precise optical control ensures virtually all of the light gets out of the cove and is delivered to the target surface.
- ITL LM-79-08 and Spectroradiometric test reports available upon request.
- Powered by the most advanced LUXEON Rebels from Philips Lumileds, the LEDs produce a consistent warm (3000K) white light with great color rendering (CRI 83).



- LED light engine assemblies are removable for service and upgrade.
- Extruded aluminum heat sink allows optimal thermal performance in cove and ceiling slots.
- Architectural (to 1%) or energy saving (to 10%) dimming optional.



- Rotation stop prevents the optic from being improperly aimed.
- Snap in cover lens protects circuit board and allows for easy cleaning.
- Available with remote driver (style S301) or integral driver (style S305).
- Patented interlocking and aiming details allow continuous rows to be aimed as one and permanently locked.



elliptipar 
There is no equal™

tambient 
Green in any color™

The Lighting Quotient
114 Boston Post Road, West Haven, CT 06516
Tel 203.931.4455 Fax 203.931.4464
www.TheLightingQuotient.com



THE LIGHTING **QUOTIENT**