

Origami

Wall - Indirect T5 / T5HO

Type:

Project:

SPECIFICATIONS Wall Mount — Modular / 8 3/8" x 3 3/4" **OR1W1**

CATALOG NUMBER

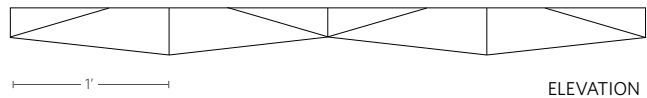
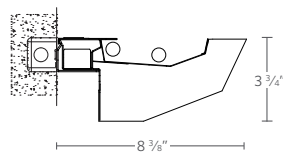
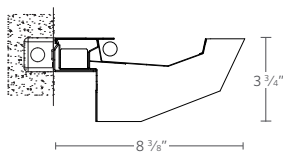
FT

Examples: OR1W1 2 28T5 24FT R8 277 GEB10 DCT LP835 C110 — OR1W1 2 28T5 40FT R8 277 GEB10 1SE EL SCT LP835 C301

AVAILABLE FIXTURES

□ OR1W1 - 1

□ OR1W1 - 2



ELEVATION

SPECIFICATIONS

Construction

Formed aluminum housing creates a 8 3/8" x 3 3/4" body and die-cast aluminum end caps mechanically attached with no exposed fasteners.

Reflectors

White, high-reflectance reflector and hammer tone aluminum reflector with prismatic acrylic kicker lens.

Finish

Aluminum powder paint housing with gloss white end caps and joiners OR gloss white, red or black housings with aluminum powder paint end caps and joiners. Consult factory for custom color requirements.

Electrical

Specify 120V, 277V or 347V. Pre-wired with 16AWG fixture wires. Consult factory for special circuiting

or wire gauge. Ballast disconnect plug and cord manager are standard. Plug-in electrical connectors included. UL and C-UL listed.

Fixture Length

4' and 8' nominal fixture sections. Nominal 4' lamp modules are 46 1/2". Add 3/4" for each end cap to determine total fixture length. Using joiners, 4' and 8' sections can be joined to form longer rows.

ORDERING LOGIC

FT								
Fixture	# of Lamps in Cross Section	Lamp Type	Nominal Row Length ¹	Maximum Section Length	Voltage	Ballast Type	# of Emergency Modules	Emergency Type ⁴
OR1W1	1 2	54T5HO 28T5	X FT	R4 4' section R8 8' section	120 277 347	GEB10 <10% THD Electronic Dimming ballasts available: ADEZ ^{2,3} Advance Mark 10 ECO10 ² Lutron ECO-10 OSDIM ^{2,3} Osram 0-10V dim S5 ² SIMPLY5™ <i>Reference Ballast Chart on website or consult factory for other options.</i>	(Blank) None 1SE 2SE XSE	(Blank) None EL ² EN ² EC
Switching		Lamp Color	Finish	Options				
SCT	Single circuit	L/LP No lamp	C032 White (gloss)	DL	Damp location label			
DCT	Dual circuit	LP830 3000K 80+ CRI	C110 Aluminum	DU	Dust cover			
		LP835 3500K 80+ CRI	C301 Black (gloss)	ELH	EM through wire harness with separate feed			
		LP841 4100K 80+ CRI	C302 Red (gloss)	ELS	EM through wire harness with single feed			
		Available with T5:	C099 Custom finish	ELS2	Normal feed w/EM separate neutral			
		LP830P 3000K 80+ CRI Premier		GLR	Fast blow fuse			
		LP835P 3500K 80+ CRI Premier		GMF	Slow blow fuse			
		LP841P 4100K 80+ CRI Premier		NYC	New York City code			
		<i>Reference Lamp Chart on website or consult factory for other options.</i>						
Notes:								
1 Must be in 4' increments.			4 Emergency type is installed in last 4' of fixture sections. Separate feed required unless ELS is specified.					
2 Not available in 347 volt.								
3 Not available with 28T5 lamp type.								

Origami

Wall - Indirect T5 / T5HO

Type:

Project:

PHOTOMETRICS

Pendant Mount — Modular / 8 3/8" x 3 3/4"

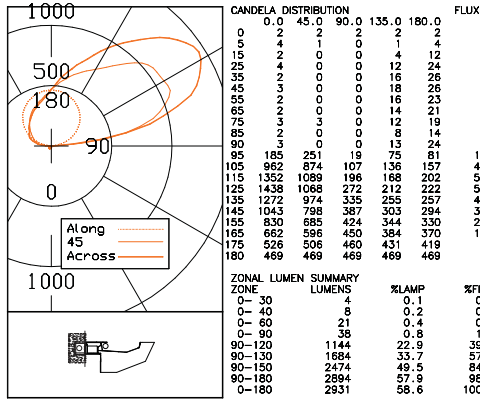
OR1W1

1 LAMP T5HO

2 LAMP T5HO

FAR-FIELD PHOTOMETRY
REPORT NUMBER: 8797 DATE: 7-18-2011

CATALOG NUMBER: OR1W1-1-54
LUMINAIRE: 8 3/8"W X 3 3/4"H INDIRECT WALL MOUNTED LIGHT WITH WHITE PAINTED REFLECTOR
LAMP(S): FP54/835/HO RATED ● 5000 LUMENS
BALLAST: QTP 1X54T5HO/UNV PSN
MOUNTING:
LUMEN TO CANDELA RATIO USED = 9.15
TOTAL INPUT WATTS = 60.5 AT 120.0 VOLTS
THE 0 DEGREE PLANE IS PERPENDICULAR TO THE LAMPS.



LUMINANCE DATA IN FOOTLAMBERTS
ANGLE AVERAGE AVERAGE AVERAGE
IN DEG 0-DEG 45-DEG 90-DEG

45	84.	0.	0.
55	48.	0.	0.
65	43.	0.	0.
75	61.	71.	0.
85	40.	0.	0.

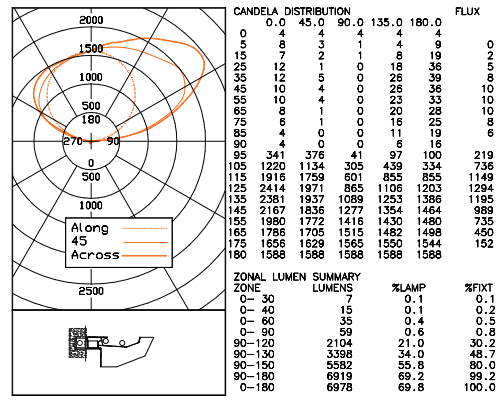
TOTAL LUMINAIRE EFFICIENCY = 58.6 %
CIE TYPE - INDIRECT

APPROVED BY:

TESTED IN ACCORDANCE WITH IES PROCEDURES, TEST DISTANCE EXCEEDS 25.0 FEET

FAR-FIELD PHOTOMETRY
REPORT NUMBER: 8795 DATE: 7-18-2011

CATALOG NUMBER: OR1W1-2-54
LUMINAIRE: 8 3/8"W X 3 3/4"H INDIRECT WALL MOUNTED LIGHT WITH WHITE PAINTED REFLECTOR
LAMP(S): FP54/835/HO RATED ● 5000 LUMENS
BALLAST: QTP 2X54T5HO/UNV PSN
MOUNTING:
LUMEN TO CANDELA RATIO USED = 9.15
TOTAL INPUT WATTS = 120.7 AT 120.0 VOLTS
THE 0 DEGREE PLANE IS PERPENDICULAR TO THE LAMPS.



LUMINANCE DATA IN FOOTLAMBERTS
ANGLE AVERAGE AVERAGE AVERAGE
IN DEG 0-DEG 45-DEG 90-DEG

45	292.	117.	0.
55	292.	88.	0.
65	181.	23.	0.
75	128.	11.	0.
85	83.	0.	0.

TOTAL LUMINAIRE EFFICIENCY = 69.8 %
CIE TYPE - INDIRECT

APPROVED BY:

TESTED IN ACCORDANCE WITH IES PROCEDURES, TEST DISTANCE EXCEEDS 25.0 FEET