

# Isolé® IDP-3050 Plug Load Controller

Energy saving control system for desktop plug load equipment

Eight outlet power strip with surge protection

Power strip has lifetime warranty and \$25,000 connected equipment warranty

Personal sensor signals controlled equipment on and off based on occupancy

6 outlets are controlled by occupancy; 2 outlets are uncontrolled



PROJECT

LOCATION/TYPE

## Product Overview

### Description

The Isolé IDP-3050 is an energy saving control system that provides maximum surge and noise suppression while keeping plug load equipment off during times of vacancy. It consists of an eight outlet power strip and a personal occupancy sensor.

### Operation

The IDP-3050 turns plug load devices on and off based on occupancy. The personal sensor connects to the eight outlet power strip with the attached cable. The power strip contains six outlets controlled by occupancy and two outlets that are uncontrolled. The IDP-3050 automatically turns all controlled devices on when the workspace is occupied. These devices turn off after the workspace is unoccupied and the user-defined time delay elapses. Uncontrolled devices remain on regardless of occupancy.

### Surge Suppression

The power strip provides a high degree of surge suppression that protects connected equipment against threats like power surges, lightning strikes and voltage spikes. It features a resettable circuit breaker and two LEDs that indicate that the outlet is wired and grounded properly and the surge protection is functioning.

### Application

The IDP-3050 is ideal for controlling task lighting and computer monitors. Additional devices for the controlled outlets include space heaters, fans and other equipment that can be turned off during unoccupied periods. Devices such as CPUs and fax machines should be plugged into the uncontrolled outlets. Applications include workstations, open office cubicles, offices and engineering stations.

## Features

### Power Strip

- Eight outlets; six controlled, two uncontrolled
- Provides surge and noise suppression to protect desktop equipment
- Ground protected for safety; will not operate without a grounded outlet
- Two LEDs: one indicates correct wiring and grounding; one indicates surge protection is functioning
- Installation requires no hardwiring
- Flat offset plug for wire management
- One uncontrolled outlet and one controlled outlet are wall transfer enabled
- Plugs into a standard 3 prong outlet

### Personal Sensor

- Uses passive infrared (PIR) technology to detect occupancy
- User adjustable time delay of 30 seconds to 30 minutes
- Fresnel lens with up to 120° and 300 square feet of coverage
- ASIC technology reduces components and enhances reliability



legrand

www.wattstopper.com  
800.879.8585

# IDP-3050 Technical Information

## Specifications

### Power Strip:

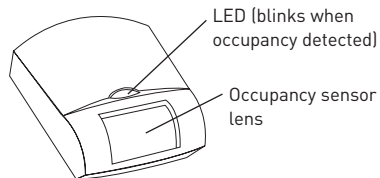
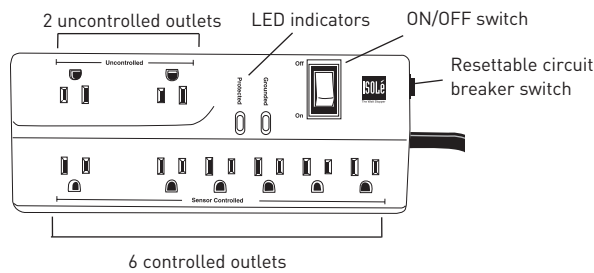
- Electrical rating: 120VAC, 15A, 50/60 Hz; 15A dry contact relay
- 15A resettable circuit breaker
- Six foot cord, black
- Transformer provides power to sensor
- Mounts with screws or double stick tape
- UL 1449 rating; 330V
- Circuit: High energy, multi-stage hybrid
- Noise filtration 0-25db (94.38%)
- Joule rating: 720
- Maximum surge amperage: 54,000 Amps
- Protection modes: 330V L-N, 330V L-G, 330V N-G
- Response time: instantaneous
- Let through voltage: 140V
- Initial clamping voltage: 200V
- UL and CUL listed; lifetime warranty, \$25,000 connected equipment warranty

### Personal Sensor:

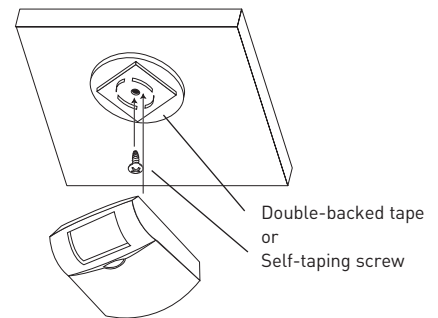
- 9 foot connector cable
- Supply voltage: 12 VDC
- UL and CUL Listed, 5 year warranty

## Controls & Mounting

### Product Controls



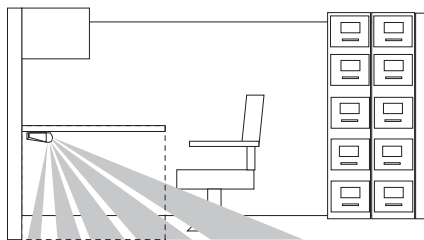
### Personal Sensor Mounting



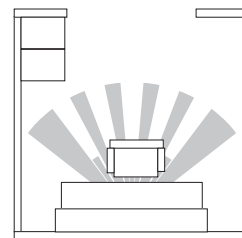
Sensor mounts under desk or binder bin with double-sided tape or self-taping screw

## Coverage

### Side Coverage



### Overhead Coverage



## Ordering Information

Catalog No.	Description
<input type="checkbox"/> IDP-3050-A	Eight outlet power strip with personal sensor
<input type="checkbox"/> DI-110	Auto-ON personal sensor
<input type="checkbox"/> CK1-1	20' extension cable. Single 1-1 connector for single sensor and power strip
<input type="checkbox"/> CK1-2	Two 10' extension cables. Duplex 1-2 connector for multiple sensors and/or power strips

Products are dark grey