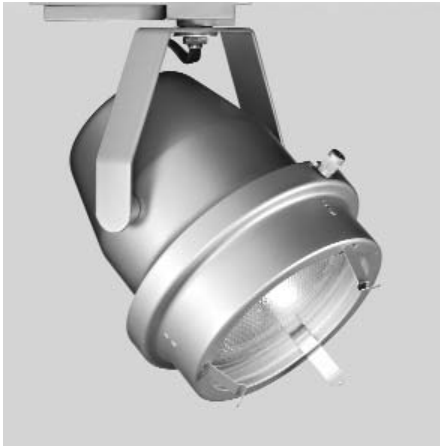


Job Name:

Type:

Order Number:

# 290 Series 120V PAR38



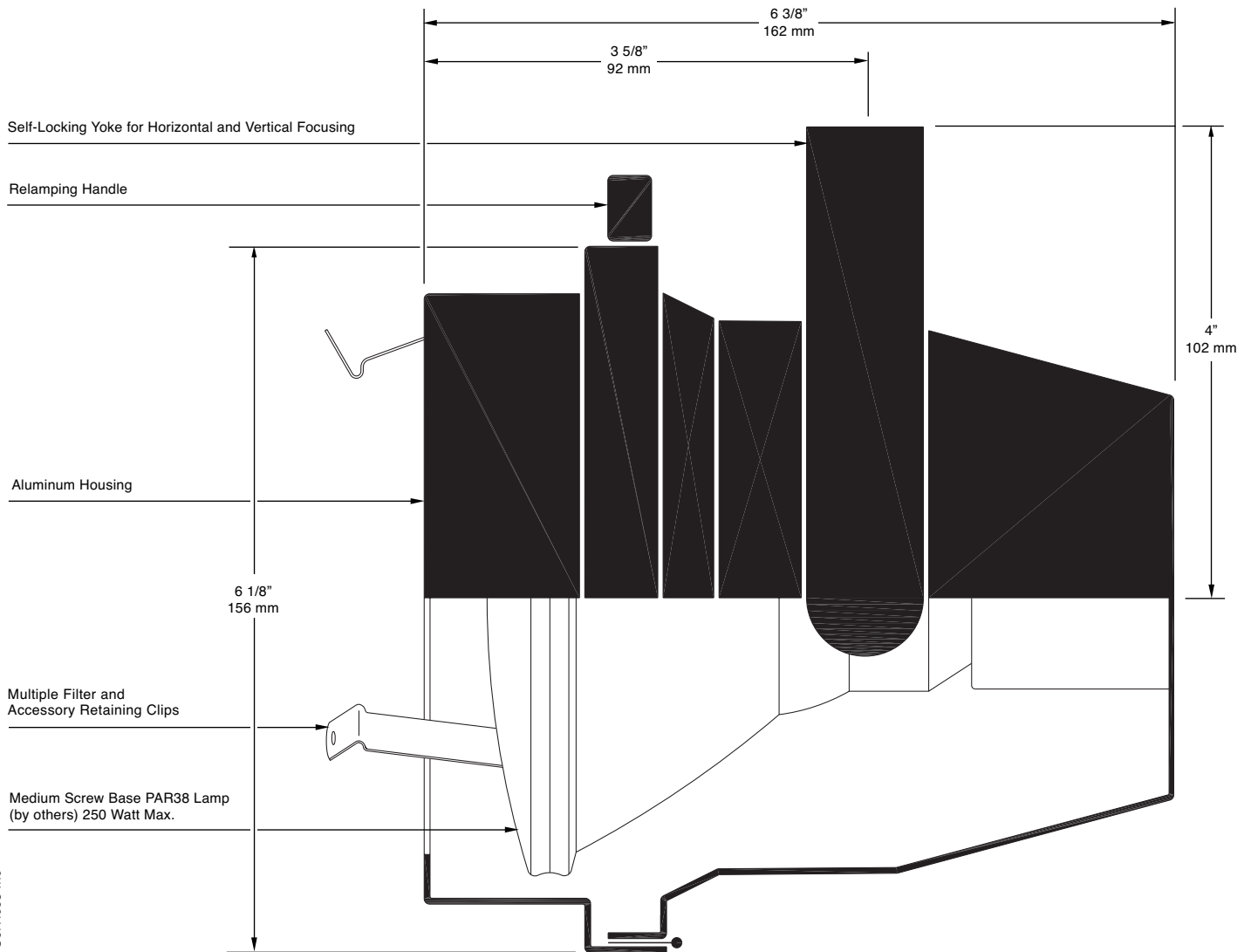
290-00

The 290 Series Spotlight is a specification grade medium and long throw unit specifically designed for all the PAR38 Energy conserving type medium screw base lamps. Its light weight and small size also make it the perfect unit in interior spaces such as museums and galleries, exhibits, boutiques, residences and similar areas where high-intensity light is needed.

The unit accepts a wide range of Standard, Halogen, Halogen Infrared, and Cool Beam type lamp wattages in all popular beam patterns and is obtainable with a complete range of mounting devices in addition to the LSI Track Fitting.

Features include rugged steel self-locking full yoke, on/off switch on most mounting types, and accessory clips for the full line of LSI size C accessories, including: Glass Color Filters, Spread Lens, Louver, Hood, Barndoors, Light Blocking Screens, UV Blocking Filter, Coiled Cord and Integral Dimmer.

UL and CUL Listed/CE Certified  
USA Manufactured/IBEW



© 1985 Lighting Services Inc

# 290 Series 120V PAR38

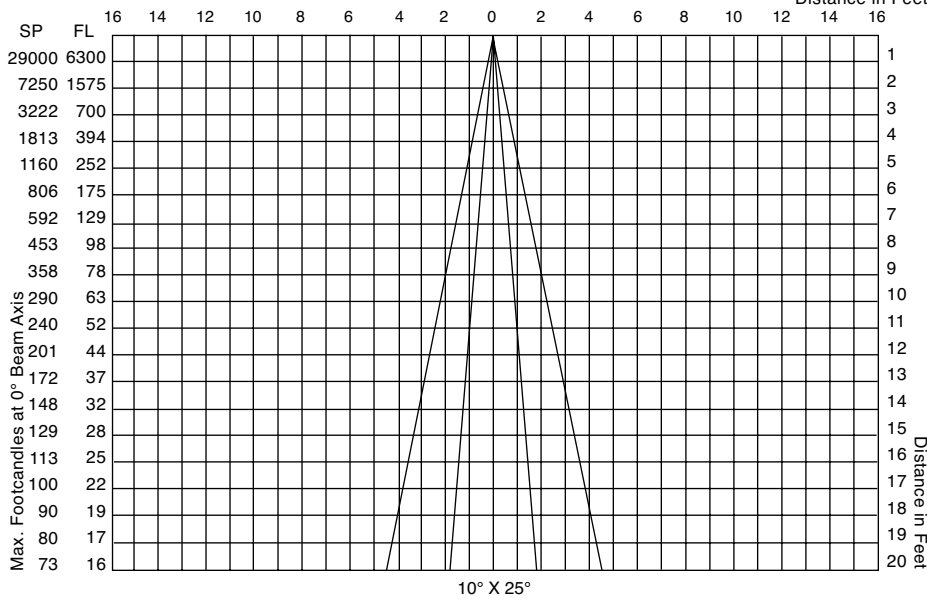
## Photometric Data<sup>7</sup>

**100PAR/HIR/SP10°** 100 watt  
Halogen Infrared Spot/2900K  
Beam Spread to 50% of CBCP  
Center Beam Candlepower

10°  
29000

**100PAR/HIR/FL25°** 100 watt  
Halogen Infrared Flood/2900K  
Beam Spread to 50% of CBCP  
Center Beam Candlepower

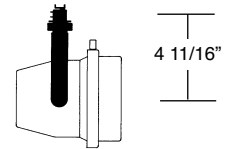
25°  
6300



## Ordering Information

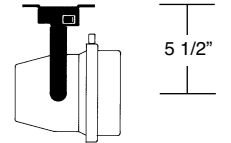
**Model Number**  
add suffix letters for finish

**290-00**  
Lexan Fitting for  
1 and 2 circuit LSI  
Track. With switch.

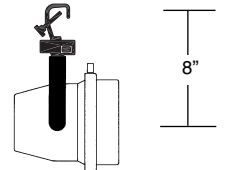


**290-00F**  
Same as above,  
with fuse.

**290-2G**  
Universal fitting for  
Unistrut Systems and  
any screw or bolt-up  
applications. With  
switch, 6-foot 3-wire  
grounding cord  
and plug.



**290-3G**  
C-clamp for pipes  
from 5/8" to 2" O.D.  
With switch, 6-foot  
3-wire grounding  
cord and plug.



## Lamp Types

**60PAR/HIR/SP10°** 60 watt, 3000 hours  
CBCP 20000 / Color Temperature 2875K

**60PAR/HIR/FL30°** 60 watt, 3000 hours  
CBCP 3600 / Color Temperature 2875K

**60PAR/HIR/FL40°** 60 watt, 3000 hours  
CBCP 2000 / Color Temperature 2875K

**80PAR/HIR/SP10°** 80 watt, 3000 hours  
CBCP 25000 / Color Temperature 2900K

**80PAR/HIR/FL25°** 80 watt, 3000 hours  
CBCP 5500 / Color Temperature 2900K

**90PAR/H/SP10°** 90 watt, 2500 hours  
CBCP 16000 / Color Temperature 2870K

**90PAR/HIR/SP12°/XL** 90 watt, 6000 hours  
CBCP 12000 / Color Temperature 2800K

**90PAR/H/FL25°** 90 watt, 2500 hours  
CBCP 4100 / Color Temperature 2870K

**90PAR/H/CB/FL25°** 90 watt, 2500 hours  
CBCP 4100 / Color Temperature 2870K

**90PAR/HIR/FL40°/XL** 90 watt, 6000 hours  
CBCP 2800 / Color Temperature 2800K

**100PAR/HIR/SP10°** 100 watt, 3000 hours  
CBCP 29000 / Color Temperature 2900K

**100PAR/HIR/FL25°** 100 watt, 3000 hours  
CBCP 6300 / Color Temperature 2900K

**100PAR/HIR/FL40°** 100 watt, 3000 hours  
CBCP 3400 / Color Temperature 2900K

**Q250PAR/SP10°** 250 watt, 4200 hours  
CBCP 40000 / Color Temperature 2880K

**Q250PAR/FL30°** 250 watt, 4200 hours  
CBCP 9000 / Color Temperature 2880K

## Accessories

### Louwer C

1/2" cellular metal louwer, controls spill light and glare, 45° cutoff.

### Hood C

3" deep cylindrical hood controls spill light and glare, black interior.

### Hood Sparkle C

3" deep cylindrical hood controls spill light and glare, with decorative sparkle effect.

### Cross Baffle C

2 1/8" deep cylindrical cross baffle hood, controls spill light and glare, black interior.

### Delta Baffle C

2 1/8" deep cylindrical delta baffle hood, controls spill light and glare, black interior.

### Barndoor C

4-way individually adjustable blades for control of light beam.

### Glass Color Filters, Size C

Selection of 95 permanent rimmed dichroic and rimmed and slotted standard colors.

### Spread Lens C990

Permanent glass for spreading light beam in one axis, 5° X 50°.

### Spread Lens C992

Permanent molded glass lens for spreading light beam in one axis—nominal 5° X 30°.

### Spread Lens C995

Permanent molded glass lens for spreading light beam in all directions—nominal 50° X 50°.

### Spread Lens C996

Permanent molded glass lens for spreading light beam slightly more in one direction than the other—nominal 45° X 50°.

### Beam Softener C998

Permanent glass lens for conditioning light to create a softer beam.

### OPTIVEX™ UV Blocking Filter C962

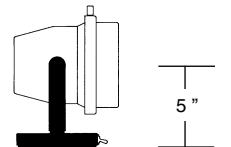
Eliminates ultra-violet wavelengths below 410±10nm. Especially useful for conservation of artworks and to help prevent fading.

### Wrench Locking

For permanent locking of fixture position, add "WL" to model number.

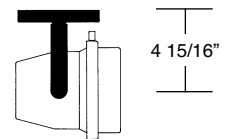
### \* 290-4G

Cushioned weighted base for floor or table use. With switch, 6-foot 3-wire grounding cord and plug.



### 290-5

Canopy for permanent mounting on standard 4" octagonal outlet boxes.



### Light Blocking Screens, Size C

C801S-20% Light Blocking, C802S-30% Light Blocking, C803S-40% Light Blocking Stainless Steel Screens. Used individually or in combination to reduce transmitted light without changing its color temperature.

### Coiled Cord

18/3 105°C, 18" retracted, 6 foot extended. Specify by adding suffix **CC** to model number. White fixture supplied with white cord, all other finishes supplied with black cord.

### Integral Dimmer

For Yoke Mounted Dimmer add Suffix "FD" to model number.

### Finishes (Paint)

Black (suffix B)  
White (suffix W)  
Silver (suffix S)  
Graphite (suffix G)  
Platinum (suffix P)

### Notes:

1. CBCP = Center Beam Candlepower
  2. K = Color Temperature in Kelvin degrees
  3. H = Halogen
  4. HIR = Halogen Infrared
  5. CB = Cool Beam
  6. OPTIVEX™ glass is a trademark of Bausch & Lomb Inc.
  7. Lamp Manufacturers Published Data
- \* Non-UL and Non-CUL